

21.00 M / 68'90"



## MAIN CHARACTERISTICS

<b>Designer</b>	Bertram Yachts
<b>Built Year</b>	2003
<b>Hull Material</b>	GRP
<b>Length</b>	21.00 M / 68'90"
<b>Beam</b>	5.52 M / 18'10"
<b>Draft</b>	1.60 M / 5'25"
<b>Displacement</b>	42.00 tons
<b>Lying</b>	South of France
<b>Registry</b>	England
<b>Tax Status</b>	VAT PAID

**695,000 EUR** 802,160 USD\*

\* Approximate price conversion

🏠 Address:

3 Rue de la Loge L-1945 Luxembourg

📞 Contact

Thomas Peltier • P: +352.27.40.99.90 • M: +352.621.326.323

✉ E-mail:

t.peltier@seastemia.com

## DESCRIPTION

---

Welcome in front of a brilliant illustration of the "state of the art" navigation demonstrator back in Ferretti history. The Bertram was and remains from all time highly respected for those "experienced yachters" and owners, a reference in terms of sea going capabilities, "seaworst" strong and durable design, and practicability; one of the best Deep V-Hulls built and designed for the demanding fishing needs of the Atlantic ocean to confront itself with other US competitors in the segment; in other word it is one of the reference in terms of safety at sea ! This exemple of 63 Convertible is one of the few, perfectly maintained ones, kept in its best original conditions from its second owner who took close attention on her since now 13 years. The yacht was used solely privately with a permanent captain onboard, and kept in winterization in dry docks every seasons. Apart from the stabs, her specification is full and in the best 4 cabins layout, her volumes are gorgeous and comparable in many aspect in much larger actual yachts. All of her systems are running properly with many recent important changes, like fire protection system, batteries... She got several upgrade in the time, notably with an hydraulic platfom added on the stern, the general overall condition is excellent and she is ready to serve again the next owner for years ahead for its best satisfaction!

## SPECIFICATIONS

---

### BOAT DETAILS

<b>Main Category</b>	Motor yacht	<b>Boat Status</b>	Brokerage
<b>Built Year</b>	2003	<b>Lying</b>	South of France
<b>Registry</b>	England	<b>Tax Status</b>	VAT PAID

### CERTIFICATION

<b>Category</b>	A
-----------------	---

### BUILDER / DESIGNER

<b>Designer</b>	Bertram Yachts	<b>Model</b>	BErtram 63 Convertible
<b>Hull Type</b>	Planning Hull	<b>Hull Configuration</b>	Mono Hull
<b>Hull Material</b>	GRP		

### DIMENSIONS

<b>Length</b>	21.00 M / 68'90"	<b>Beam</b>	5.52 M / 18'10"
---------------	------------------	-------------	-----------------

## DIMENSIONS

<b>Draft</b>	1.60 M / 5'25"	<b>Displacement</b>	42.00 tons
<b>Ballast Weight</b>	42.00 tons		

## MACHINERY

<b>Engine Maker</b>	Caterpillar	<b>Drive</b>	Shaft
<b>Number of Engines</b>	2	<b>Propulsion Mode</b>	Diesel
<b>Engine(s) power</b>	1,652.00 hp	<b>Engine(s) model</b>	ACERT C32
<b>Engine 1 hours</b>	1,712.00 H.	<b>Engine 2 hours</b>	1,712.00 H.
<b>Main Generator Maker</b>	Kohler	<b>Main Generator Power</b>	20.00 KW
<b>Main Generator Hours</b>	750.00 H.	<b>Auxiliary Generator Maker</b>	Kohler
<b>Auxiliary Generator Power</b>	20.00 KW	<b>Auxiliary Generator Hours</b>	750.00 H.

## TANKAGES

<b>Fuel</b>	5,800.00 liters / 1,531.20 US gals	<b>Water</b>	1,325.00 liters / 349.80 US gals
-------------	------------------------------------	--------------	----------------------------------

## ACCOMODATIONS

<b>Sleeps</b>	8 guests	<b>Berths</b>	4 simple, 2 double
---------------	----------	---------------	--------------------

## ACCOMODATIONS

**Bathroom** 3

## LAYOUT / INTERIOR

---

Air Conditioning all along the boat and in each cabins

**KITCHEN:**

Four Fridges freezers drawers.

Microwave

Dishwasher

cooktop plate 4 burners.

Dining Area

Central Vacuum System

Salon area with Ice Maker

Large storages under the sofa

Ice maker in salon area

**COCKPIT:**

Large Enclosed cockpit of approx 15m2 with closed Shower

foldable Bimini Taud at the aft

Drawer Freezer

Folding table

**BOW:**

Sun bathing area at the bow

Fenders Compartment

**LOWER DECK:**

Wasging machine

Dryer

**FLY BRIDGE:**

Convertible Dining to Sunpad Table

Electric Opening Rooftop

Full enclosure in a proper condition

Multiple storages areas, for life jacket and more.

Upholstery remade in most of the Yacht



## COMMUNICATION & NAVIGATION EQUIPMENT

---

### **ELECTRONICS:**

Plotter Raymarine C120

Depthsounder Furuno RD30

Radar Detector

Autopilot Simrad AP25

VHF ICOM IC-M601

Radio

CD player

Compass

GPS

2 Electrical Retractable Shore pwer cables of 32 Amp.

**HI-FI MEDIAS:**

TV Set LED 40" SALON SAMSUNG

SYSTEM HIFI/ SHARP & Bose Lifestyle 5.1

SAT TV KVH Trackvision

TV Set LED 26" in MAster Cabin

Sat Receiver in each cabins

TV Set LED IN Twin Cabin

LCD TV SET in VIP and Second Guest.

## RECREATIONAL EQUIPMENT

---

### TENDER:

Annexe Arimar 3.5 meters inflatable 2016 with HB engine Yamaha 5HP









21.00 M / 68'90"













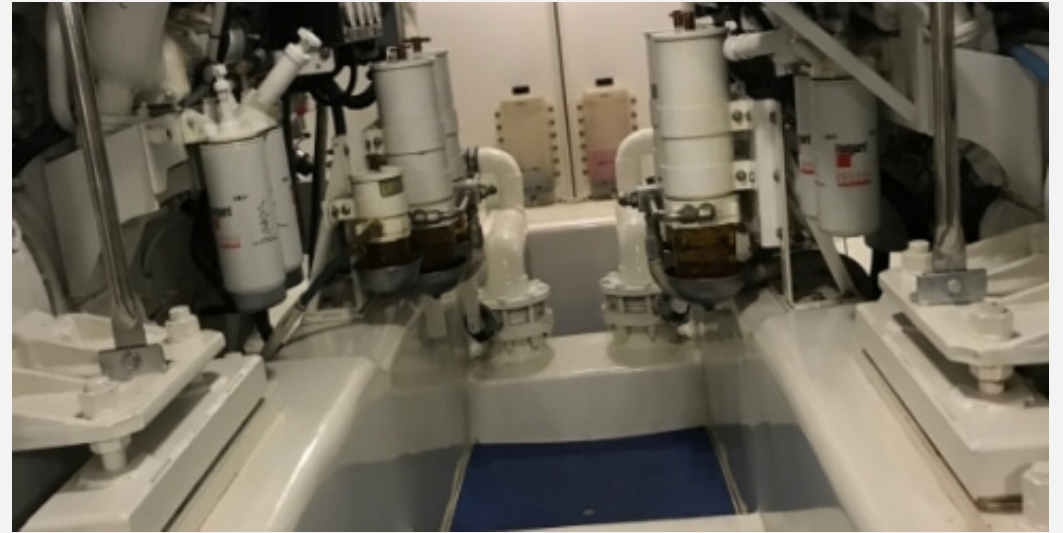


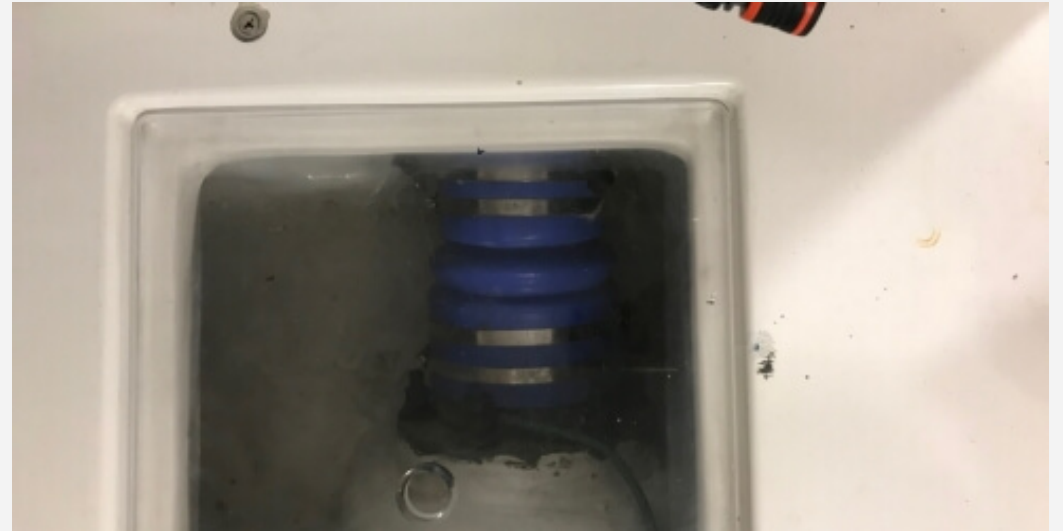














21.00 M / 68'90"

