



MAIN CHARACTERISTICS

Builder	Custom Line
Built Year	2016
Length	28.31 M / 92'89"
Beam	7.00 M / 22'96"
Draft	2.21 M / 7'25"
Displacement	106.09 tons
Lying	indonesia
Registry	Indonesia
Tax Status	VAT UNPAID

5,300,000 EUR 6,212,607 USD*

* Approximate price conversion



Address:

3 Rue de la Loge L-1945 Luxembourg



Contact

Thomas Peltier • P: +352.27.40.99.90 • M: +352.621.326.323



E-mail:

t.peltier@seastemia.com

DESCRIPTION

The Custom Line Navetta 28 is a compact, yes spacious luxury tri-deck motor yacht, designed by Zuccon International Project with Ferretti Engineering developing the naval architecture. Built in 2016, the Navetta 28 is optimised to accommodate 10 guests in 5 cabins. The Master cabin is located on the main deck and 3 VIP cabins and a twin cabin on the lower deck. All the cabins are equipped with a personal bathroom. There is also 3 crew cabins for 5 crew members on the lower deck with a separate access. This vessel is fitted with all the options, a tropical air conditioning and fins stabilizers for maximum comfort. Please, contact us for more information.



Address:

3 Rue de la Loge L-1945 Luxembourg



Contact

Thomas Peltier • P: +352.27.40.99.90 • M: +352.621.326.323



E-mail:

t.peltier@seastemia.com

SPECIFICATIONS

BOAT DETAILS

Built Year	2016	Lying	indonesia
Registry	Indonesia	Tax Status	VAT UNPAID

CERTIFICATION

Certification	RINA	Category	A
Compliance	B + R + Aa Sound Emission		

BUILDER / DESIGNER

Builder	Custom Line
----------------	-------------

DIMENSIONS

Length	28.31 M / 92'89"	Beam	7.00 M / 22'96"
Draft	2.21 M / 7'25"	Displacement	106.09 tons



Address:

3 Rue de la Loge L-1945 Luxembourg



Contact

Thomas Peltier • P: +352.27.40.99.90 • M: +352.621.326.323



E-mail:

t.peltier@seastemia.com

MACHINERY

Engine Maker	MAN	Drive	Shaft
Number of Engines	2	Propulsion Mode	Diesel
Engine(s) type	Inboard	Engine(s) power	1,200.00 hp
Engine(s) model	Man V8 - 1200	Engine 1 hours	550.00 H.
Engine 2 hours	550.00 H.	Main Generator Maker	Kohler
Main Generator Power	28.00 KW	Main Generator Hours	1,000.00 H.
Auxiliary Generator Maker	Kohler	Auxiliary Generator Power	20.00 KW
Auxiliary Generator Hours	1,000.00 H.	Stabilizer Maker	Stabilizer fins underway and zero speed
Water Maker	250 ltrs x 2 Duplex IDROMAR	Water Maker Flow	500.00 l/H / 132.00 gal/H
AC type	Tropical (Salon + Cabins + 3 Crew)		

PERFORMANCES

Cruising Speed	11.00 knots	Max Speed	15.00 knots
-----------------------	-------------	------------------	-------------

TANKAGES

Fuel	12,500.00 liters / 3,300.00 US gals	Water	2,000.00 liters / 528.00 US gals
-------------	-------------------------------------	--------------	----------------------------------



Address:

3 Rue de la Loge L-1945 Luxembourg



Contact

Thomas Peltier • P: +352.27.40.99.90 • M: +352.621.326.323



E-mail:

t.peltier@seastemia.com

TANKAGES

Grey Water

700.00 liters / 184.80 US gals

Black Water

700.00 liters / 184.80 US gals

ACCOMODATIONS

Sleeps	10 guests	Berths	2 simple, 4 double
Bathroom	6	Crew	5
Crew Berths	5		

LAYOUT / INTERIOR

- Main deck salon - custom free standing furniture:
- -armchair by Poltrona Frau, Archibald King model;
- -footrest by Poltrona Frau, Archibald King model;
- -decorative item by Poltrona Frau, art. "Mini vanity fair";
- -two side coffee tables by Poltrona Frau, Fiorile model by Roberto Lazzeroni (Ash wood finishing);
- -one coffee table by Poltrona Frau, Fiorile model by Roberto Lazzeroni (marble finishing);
- UD - New rounded glass table with lazy susan - custom built
- UD - N. 2 extra dining chairs in leather "Poltrona Frau"
- MD - New dining table, wood / stainless steel, foldable - cutstom built
- MD - N. 4 dining harmchairs for outdoor use "Manutti"
- MD - New saloon sofa + 2 ottoman + 2 lamps

- Williams Jet Tender 445
- Up grade for lifting system for waverunner installation on the transom platform
- Seadoo Spark 2 seats
- color's change of mirror in low furniture in bathrooms (from Bronze color to mirror color)
- Bronze mirror on centre wall of lower deck VIP cabins - diff. from standard wood
- Cabins: Nabuk genuine leather upholstery for bed headboard - diff. from standard
- Main bridge: steering wheel's upholstery in genuine leather upholstery - diff. from standard
- Galley: floor diff. from standard (White vinyl)
- Galley: top and table in marble extra White - diff. from standard
- Main deck salon: custom sofa Minotti style, William model diff. from standard
- closed furniture at salon's entrance
- electrical curtain at stern - diff. from standard
- lower deck carpet - diff. from standard
- lower deck lobby - floor: perimetral frame in wood
- water line in Bronze color - diff. from standard
- dome stripes in Bronze color - diff. from standard
- Main deck salon: additional rug 4,5 x 2,35mt
- cabins: bedcovers diff. from standard
- Master cabin and Upper Deck salon: audio's upgrade
- Cockpit chairs (4): by Manutti, Squad model, Sand color
- Main deck salon, cabins and Upper Deck: decorative cushions (additional)
- Interior's wood diff. from standard ("Canaletto" walnut)
- Galley: induction cooking top 5 hobs - diff. from standard
- Galley: additional freezer (74 litres)
- Sun Deck: bottle-drawer type fridge
- LED panels in lower deck cabins
- LED panels in main deck cabin
- LED panels in Upper Deck
- strip LED in framed curtains in Master cabin
- cabins: LED lights on bedheads (5)
- Lower deck: air extractors in bathroom/shower in VIP and Guest cabins' bathrooms (4)
- tubular light behind the back in bow dinette
- additional LED lights on Sun Deck

- roll-up blinds for garage
- teak flooring in movable platform in garage
- lights for swimming platform steps
- Galley: wine cellar
- TV 55" LED SMART version with lift on ceiling diff. from standard 46" in Main Deck salon
- TV 46" in Master cabin - diff. from standard
- TV LED 40" - diff. from standard 32" in portside bow Guest cabin
- TV LED 40" - diff. from standard 32" in aft starboard side VIP cabin
- TV LED 40" - diff. std 32" in aft bow VIP cabin
- Galley: additional TV 22" and DVD player with loudspeakers (diff. from standard CD player)
- TV LED 40" smart TV with lift and rotation 180° in external cockpit Upper Deck
- Upper Deck salon: standard TV 32" not to be supplied
- Main bridge dashboard: Simrad upgrade with double Black Box and full monitors' upgrade (bigger dimension possible) - diff. from standard
- Main bridge: Hi-Fi stereo FM/CD w/loudspeakers
- antenna TV SAT KVH M9 with receiver in saloon
- antenna empty dome for M9 for symmetry on roll-bar
- A/V package PREMIUM CONTROL area A
- A/V PACKAGE PREMIUM SOUND - outdoor
- Wooden floor in main deck (White color)
- TV furniture with shelves in White painted oak in lower deck VIP cabin
- upholstered windows' frame in lower deck and main deck (living room and galley excluded)
- change of interior and external furniture and walls panels in the bathrooms - diff. from standard
- marble upholstery in bathrooms - diff. from standard
- tropical air conditioning system (salon + cabins + 3 crew)
- generator Köhler 28 kw - different from 20 kw auxiliary
- stern thruster hydraulic 40hp
- Xenon underwater lights on the sides of the hull (4+4) - diff. from standard
- Xenon lights under bath platform
- tilt window with mosquito net in Master cabin and bathroom starboard side
- extendable window in Master cabin with mosquito net, port side
- twin beds (sliding) in starboard side Guest cabin - diff. from standard
- Treatment system for Black water Hamman
- stern electric door lounge - diff. from standard

- teak on Upper Deck forward area
- control station with fixed cover in the cockpit
- Watermaker Idrohmar 250+250 l/h duplex - diff. from standard
- Dimmer light lower deck
- Dimmer light upper deck
- Dimmer light main deck
- dimmer light in the cockpit
- Electrical curtains in VIP cabins (2) and Guest cabins (2)
- electrical raising for curtains in Master cabin
- Galley: 230V waste mincer
- washer and dryer (separate units) 5,5 kg - diff. from standard
- galley: oven 90 cm (no microwave) - diff. from standard
- ice maker with independent water tank on Sun Deck
- anchor chain 100m(14mm) - diff. from standard
- anchor chain 130m(14mm) - diff. from standard
- digital chain counters
- pullman bed in starboard side Guest cabin
- cylindrical shaped Blue fender cover with Custom Line logo
- spherical shaped Blue fender cover with Custom Line logo
- Chinese sockets - diff. from standard
- FURNITURE: Canaletto walnut.
- Navetta 28 hull no.03
- DASHBOARD: Black painted.
- PILOT SEAT, STEERING WHEEL and SOFA: Black genuine leather upholstery
- MAIN DECK FLOOR: White oak wood.
- GALLEY: furniture in glossy White lacquering, floor in White vinyl, marble glossy White table included (like Ernesto Meda)
- MARBLE in MASTER BATHROOM (top washbasin, bathroom floor, shower floor and walls) and top's washbasin in DAY HEAD: Cedar stone glossy - Brown color.
- MARBLE IN LOWER DECK CABINS' BATHROOMS (top's washbasin, bathroom floor, shower floor): mat Mayax - White color.
- BED HEADBOARD IN CABINS: Nabuk genuine leather upholstery.
- SOFA in MAIN DECK salon: inspired by Minotti, model William in fabric in a light natural color.
- SALON: custom armchair with foot rest and coffee tables.
- DINING CHAIRS: by Poltrona Frau, model Fitzgerald, upholstered in White genuine leather.
- DINING TABLE: model Calligaris in glass with White basis and chromed finishing.

- FREE STANDING SOFA on EXTERNAL UPPER DECK: items by Manutti, model Zendo Pebble 25.
- BOW CUSHIONS AND COCKPIT SOFA: as per standard design.
- COCKPIT CHAIRS: by Manutti, Squat model, Sand color.
- CARPET in LOWER DECK CABINS: art. Jab Soft 3566/971



Address:

3 Rue de la Loge L-1945 Luxembourg



Contact

Thomas Peltier • P: +352.27.40.99.90 • M: +352.621.326.323



E-mail:

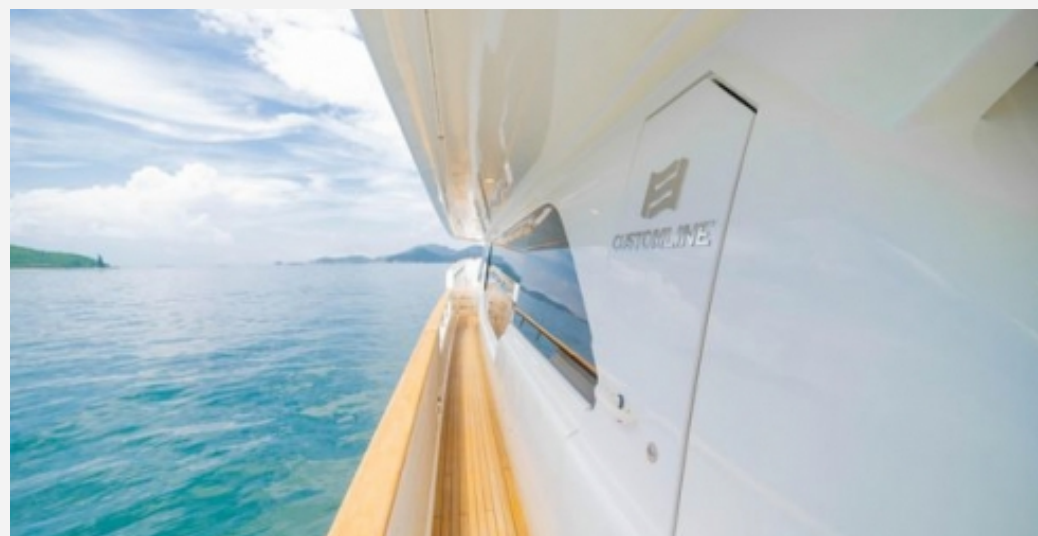
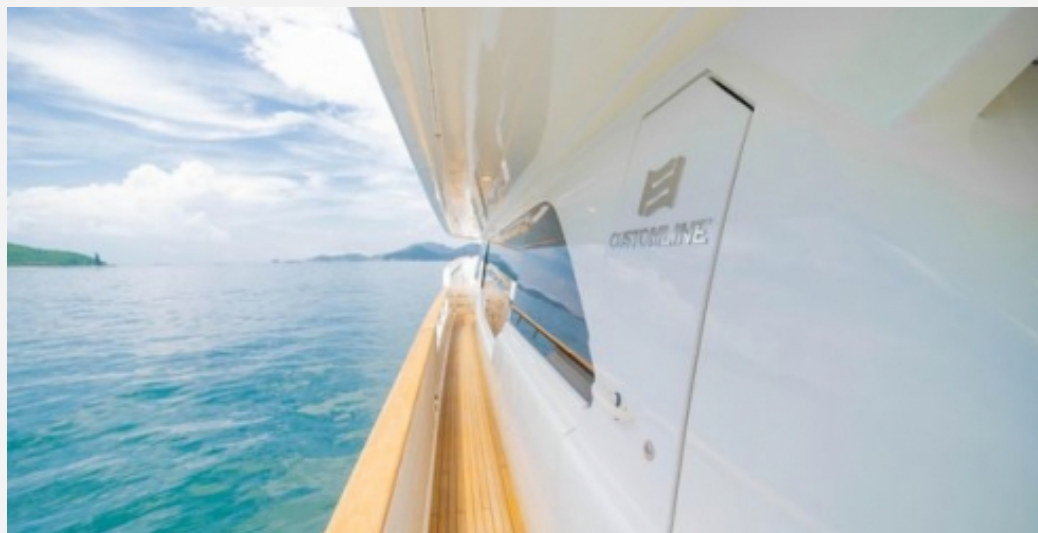
t.peltier@seastemia.com

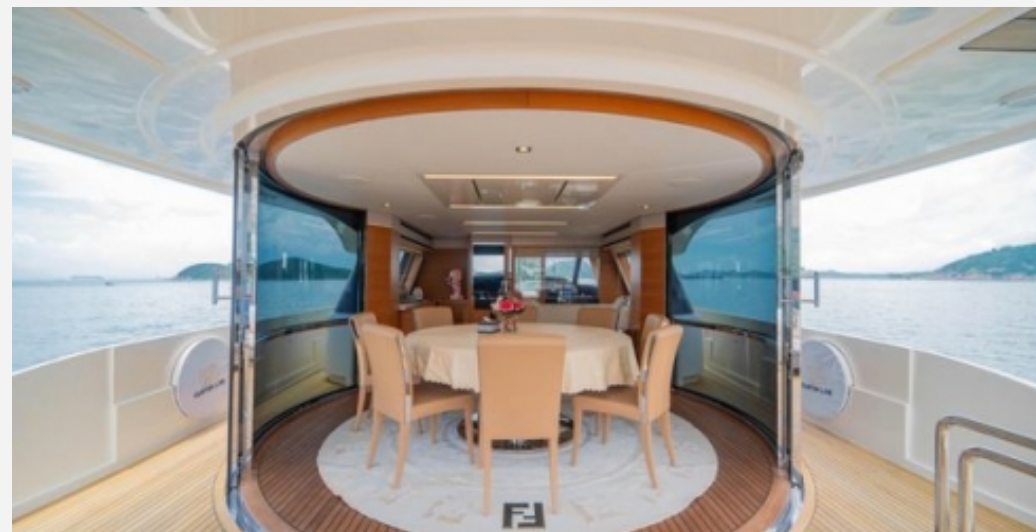
COMMUNICATION & NAVIGATION EQUIPMENT

- Hydraulic stern thruster 40 Hp (double propeller)
- Hydraulic bow thruster 40 HP (double propeller)
- Xenon Underwater lights (5 per side) - Diff. from STD
- Xenon Underwater lights under bathing platform
- Köhler 28 kw generator - Diff. from STD 20 kw (auxiliary)
- Fixed cockpit control station with cover
- 100 m anchor chain (14 mm) - Diff. from STD
- Anchor chain (14 mm) of 130 m - Diff. from STD 100 m











Address:

3 Rue de la Loge L-1945 Luxembourg



Contact

Thomas Peltier • P: +352.27.40.99.90 • M: +352.621.326.323



E-mail:

t.peltier@seastemia.com













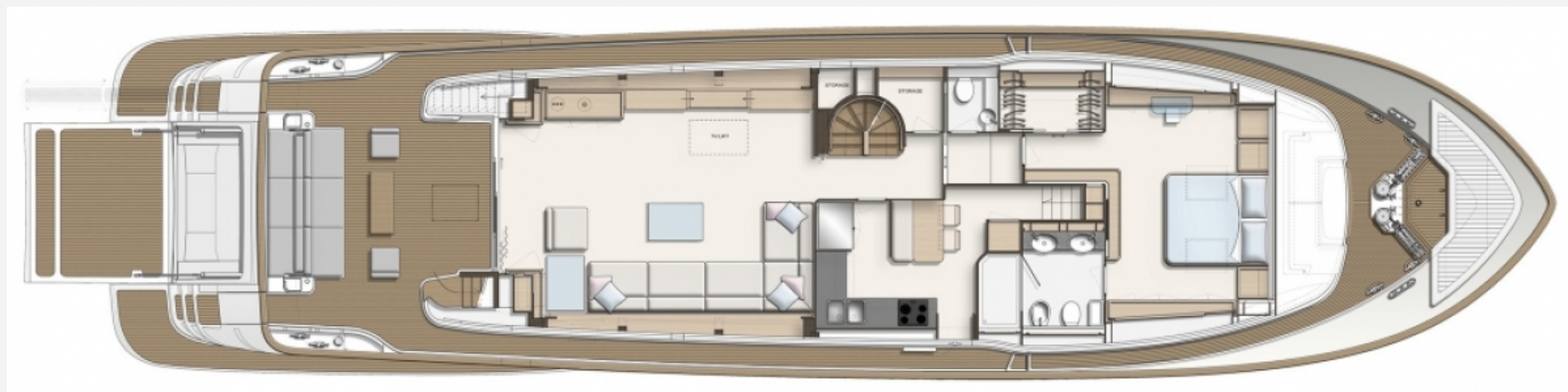


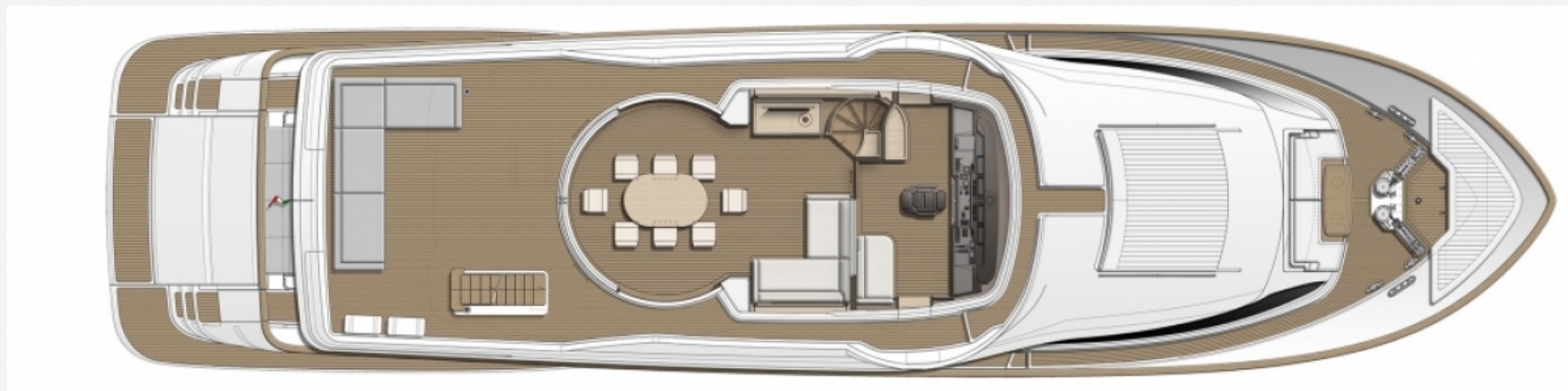


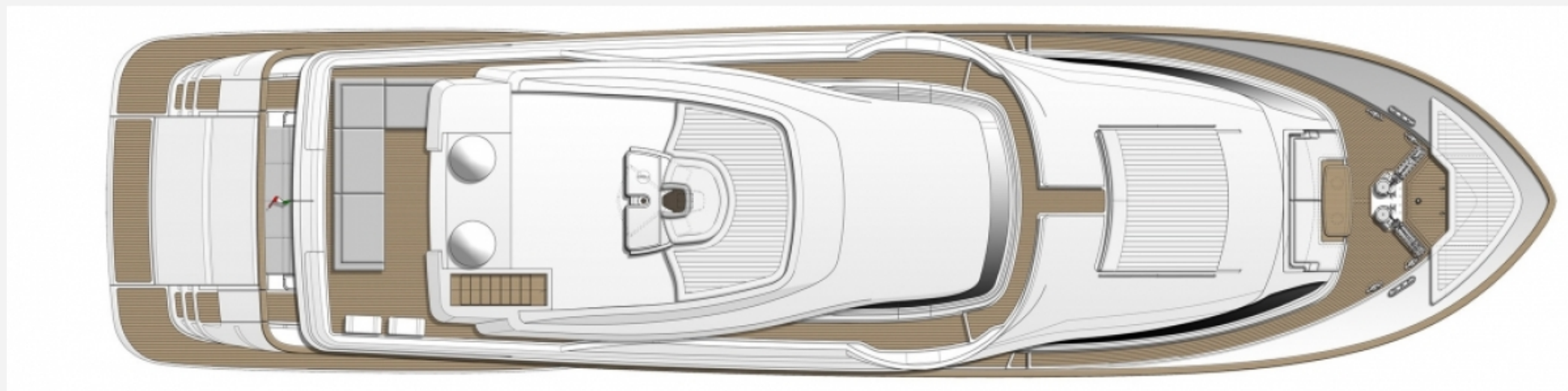
















Address:

3 Rue de la Loge L-1945 Luxembourg



Contact

Thomas Peltier • P: +352.27.40.99.90 • M: +352.621.326.323



E-mail:

t.peltier@seastemia.com