



MAIN CHARACTERISTICS

Built Year	2021
Length	16.80 M / 55'11"
Beam	8.74 M / 28'67"
Draft	1.48 M / 4'86"
Lying	Monaco
Tax Status	Not Paid

22,000 EUR 25,824 USD* **per week**

* Approximate price conversion

DESCRIPTION

The Bali 5.4 sailing catamaran has been a great success after its premier at Cannes Yachting Festival in 2018. The model marked a new turn over in sailing catamaran industry with ingenious use of space, liveability, and innovation. SIGNATURE CONCEPT strikes with incomparable performance while cruising and diverse use, enhancing her charter potential. Olivier Poncin and Xavier Fay from Catana group, have penned a hull with optimum power-to-weight ratio, using hull underwater transition into chines; wider hull sections giving more buoyancy, while adequate bridge deck clearance avoids slamming waves. Her innovative hulls allow the Bali 5.4 catamaran to carry the machinery and plenty of heavy equipment necessary in long charters, without losing in sailing performance. Full-composite construction with Divinice closed-cell foam core reduces hull weight, while substantial crossbeams provide for rigidity of construction, avoiding annoying bulkheads on main deck. The revolutionary aft glass tilting door is a unique innovation onboard SIGNATURE CONCEPT, operated simply by a button and giving access to a vast multifunctional salon, with a spacious dining area for 10 on portside, while two 615 l fridges and foldable TV on starboard. Further in, there is the fully equipped U-shaped galley and helm station, with access to port and starboard cabins, and forward, you will find her equally unique outdoor terrace. The solid foredeck is a valuable add-up to Bali 5.4 concept: it provides for more structural solidity and proves to be a favourite point for guests' gathering and can be used not only for traditional lounging, partying, and sun tanning, but also for yoga classes, and seminars outdoors. Custom cabin layout chosen by the owner is versatile and comprises 5 staterooms: Master's double suite with bathroom, also accessed from the aft cockpit, 3 double guest cabins, and a twin cabin. Hull points are equipped with 2 crew cabins with single bed each, and integrated facilities. The upper deck holds on a 24-meter aluminium mast, composite steering wheel, and rigging. The ample seating and table are shaded under a large fixed bimini providing unobstructed 360° sea views. The sailing catamaran SIGNATURE CONCEPT carries a square top reinforced Mainsail, self-tacking jib and a genoa, that can be unfurled from its short bowsprit in light air. 202 m2 of sailing area are handled easily with sizeable electric winches. Proud holder of the prestigious title "Multihull of the Year 2019", the all-new 2021 Bali 5.4 catamaran SIGNATURE CONCEPT is the best choice for a relaxed, diverse sailing charter on the French Riviera. **IMPORTANT** harter Rates: Low Season € 16,500 per week - High Season € 22,000 per week - VAT and expenses are not included



Address:

3 Rue de la Loge L-1945 Luxembourg



Contact

Thomas Peltier • P: +352.27.40.99.90 • M: +352.621.326.323



E-mail:

t.peltier@seastemia.com



Address:

3 Rue de la Loge L-1945 Luxembourg



Contact

Thomas Peltier • P: +352.27.40.99.90 • M: +352.621.326.323



E-mail:

t.peltier@seastemia.com



Address:

3 Rue de la Loge L-1945 Luxembourg



Contact

Thomas Peltier • P: +352.27.40.99.90 • M: +352.621.326.323



E-mail:

t.peltier@seastemia.com

SPECIFICATIONS

BOAT DETAILS

Built Year	2021	Lying	Monaco
Tax Status	Not Paid		

DIMENSIONS

Length	16.80 M / 55'11"	Beam	8.74 M / 28'67"
Draft	1.48 M / 4'86"		

MACHINERY

Engine Maker	Yanmar	Drive	Shaft
Number of Engines	2	Propulsion Mode	Diesel
Engine(s) type	Inboard	Engine(s) power	80.00 hp
Engine(s) model	Yanmar 80 hp		

ACCOMODATIONS

Sleeps	8 guests	Berths	2 simple, 4 double
---------------	----------	---------------	--------------------



Address:

3 Rue de la Loge L-1945 Luxembourg



Contact

Thomas Peltier • P: +352.27.40.99.90 • M: +352.621.326.323



E-mail:

t.peltier@seastemia.com

ACCOMODATIONS

Bathroom	5	Crew	3
Crew Cabin	2		

CRUISING AREA SUMMER

French Riviera, Cannes, Antibes, Monaco, Saint Tropez, Nice, Saint Jean Cap Ferrat, Villefranche, Corsica, Italian Riviera, Portofino, Naples, Capri, Sardinia

Event Charters on request: Cannes Film Festival, Cannes Lions, Monaco F1 Grand Prix, Red Bull Air Race Cannes

LAYOUT / INTERIOR

INTERIOR :

- Master suite with double "island" bed, en-suite bathroom
- 3 x Double cabins with "semi-island" beds, each with en-suite bathrooms
- 1 x Twin cabin, en-suite bathroom
- 2 Crew members in 2 cabins with integrated heads

LAYOUT

- Foredeck:
 - Removable tabletop on stainless-steel leg
 - Spacious lounging area with cushions
 - Direct watertight access door from the salon
- Upper Deck:
 - Dining area bench with cushioned seats
 - Sunbathing area
 - Large fixed bimini
- Galley:
 - 2 x 615 l "American" fridge (402 l cold + 213 l freezer)
 - Large countertop
 - 3-Burner gaz stove and hood extractor
 - Gaz oven
 - Dishwasher
 - Coffee machine



Address:

3 Rue de la Loge L-1945 Luxembourg



Contact

Thomas Peltier • P: +352.27.40.99.90 • M: +352.621.326.323



E-mail:

t.peltier@seastemia.com



Address:

3 Rue de la Loge L-1945 Luxembourg



Contact

Thomas Peltier • P: +352.27.40.99.90 • M: +352.621.326.323



E-mail:

t.peltier@seastemia.com

COMMUNICATION & NAVIGATION EQUIPMENT

HELM STATION

- Indoors helm station on starboard side
- YANMAR electric engine controls at helm station with engines and alarms panels
- RAYMARINE multifunction display, colour chart/plotter, autopilot control display
- RAYMARINE tridata (log / wind / speed)
- RAYMARINE depth sounder
- RAYMARINE VHF
- Composite 900 mm steering wheel
- Magnetic compass with correction, light and protective cover
- 2 x Balanced spade rudders with stainless-steel shaft
- 1 x Emergency tiller
- Hydraulic transmission system

DECK EQUIPMENT

- 1700W vertical axis windlass with corded remote control
- Extra windlass control at helm station
- Stainless steel bow roller under platform for main anchor
- Electric bow thrusters
- Led lighting
- 1 x Stainless-steel swim ladder on starboard transom
- Foldable composite passerelle
- Shower with pressurized hot/cold fresh water in the starboard transom
- 1 x Stainless cap for access to the emergency tiller
- 1 x Large mooring cleat on each transom

- Storage lockers



Address:

3 Rue de la Loge L-1945 Luxembourg



Contact

Thomas Peltier • P: +352.27.40.99.90 • M: +352.621.326.323



E-mail:

t.peltier@seastemia.com

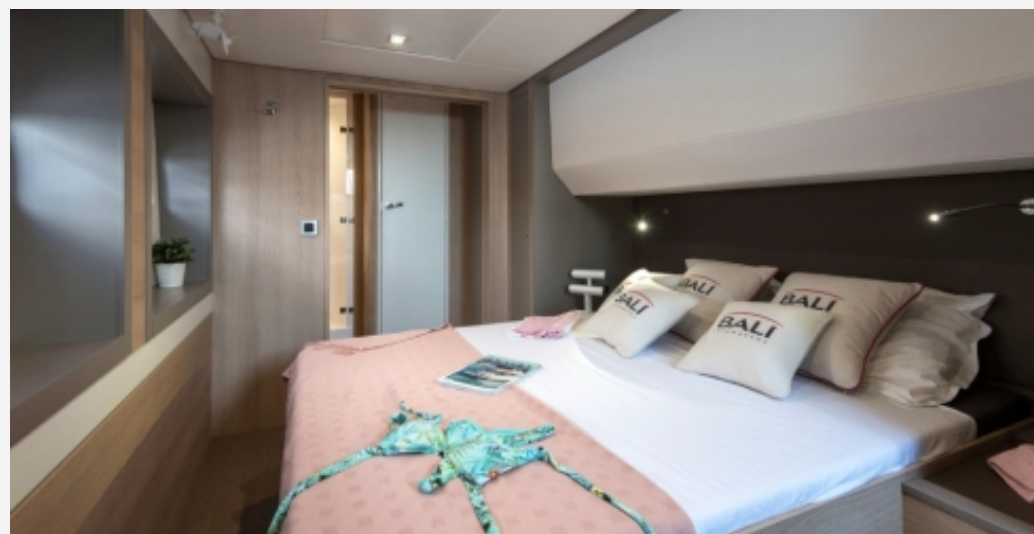
RECREATIONAL EQUIPMENT

- Tender HIGHFIELD CL 340
- TRIDENT Underwater scooter
- 2 x NELO Kayaks
- 2 x Inflatable platforms
- 2 x Paddle boards
- Snorkelling equipment
- Other toys TBD











Address:

3 Rue de la Loge L-1945 Luxembourg



Contact

Thomas Peltier • P: +352.27.40.99.90 • M: +352.621.326.323



E-mail:

t.peltier@seastemia.com



Address:

3 Rue de la Loge L-1945 Luxembourg



Contact

Thomas Peltier • P: +352.27.40.99.90 • M: +352.621.326.323



E-mail:

t.peltier@seastemia.com