

35.20 M / 115'48"



MAIN CHARACTERISTICS

Builder	Sunseeker International
Built Year	2017
Hull Material	GRP
Length	35.20 M / 115'48"
Beam	7.33 M / 24'5"
Draft	2.39 M / 7'83"
Displacement	140.00 tons
Lying	Spain
Registry	Malta
Tax Status	VAT PAID

10,500,000 EUR 12,008,787 USD*

* Approximate price conversion

🏠 Address:

3 Rue de la Loge L-1945 Luxembourg

📞 Contact

Thomas Peltier • P: +352.27.40.99.90 • M: +352.621.326.323

✉ E-mail:

t.peltier@seastemia.com

DESCRIPTION

M/Y SURVIVOR 2 is the best-priced 35M motor yacht on the market. A pedigree Sunseeker 116 Yacht with very light owners usage, low engine hours and truly exceptional crew/owner maintenance. The main Salon and Master cabin offer full-height windows, allowing plenty of natural light to enter the interior spaces, whilst perfectly complementing the modern and elegant feel of her interior. M/Y SURVIVOR 2 accommodates up to 10 guests in her 5 staterooms with her large Master suite offering two walk-in wardrobes. The foredeck has an emphasis on guest entertainment, including a jacuzzi situated on the bow and acres of foredeck seating, sunbathing and lounging areas. There are multiple outdoor entertaining areas throughout M/ Y SURVIVOR 2, with a fold-down beach platform/club on the stern to host a number of water toys. "M/Y SURVIVOR 2 is unquestionably one of the best kept yachts I have seen recently. Two owners from new, she has been extremely well maintained by her dedicated owner and crew. Without hesitation.

SPECIFICATIONS

BOAT DETAILS

Boat Status	Brokerage	Built Year	2017
Lying	Spain	Registry	Malta
Tax Status	VAT PAID		

CERTIFICATION

Certification	RINA	Compliance	MCA Compliant
----------------------	------	-------------------	---------------

BUILDER / DESIGNER

Builder	Sunseeker International	Hull Type	Planning Hull
Hull Material	GRP		

DIMENSIONS

Length	35.20 M / 115'48"	Beam	7.33 M / 24'5"
Draft	2.39 M / 7'83"	Displacement	140.00 tons

MACHINERY

Engine Maker	MTU	Drive	Shaft
Number of Engines	2	Propulsion Mode	Diesel
Engine(s) power	2,600.00 hp	Engine(s) model	MTU 16V 2000 M96L
Engine 1 hours	1,000.00 H.	Engine 2 hours	1,000.00 H.
Main Generator Maker	KOHLER	Main Generator Power	70.00 KW
Main Generator Hours	1,661.00 H.	Auxiliary Generator Maker	KOHLER
Auxiliary Generator Power	70.00 KW	Auxiliary Generator Hours	1,681.00 H.
Stabilizer Type	Hydraulic Thins	AC type	Tropical specification

PERFORMANCES

Cruising Speed	19.00 knots	Max Speed	25.00 knots
-----------------------	-------------	------------------	-------------

TANKAGES

Fuel	19,590.00 liters / 5,171.76 US gals	Water	4,000.00 liters / 1,056.00 US gals
Grey Water	1,225.00 liters / 323.40 US gals	Black Water	1,340.00 liters / 353.76 US gals

ACCOMODATIONS

Sleeps	10 guests	Berths	4 simple, 3 double
Bathroom	5	Crew	5
Crew Cabin	5		

LAYOUT / INTERIOR

Bang & Olufsen audio visual upgrade as detailed in each guest area except Wheelhouse, Crew Mess and Crew Cabins. Additional satellite decoders in the lower deck Guest Staterooms | Flybridge TV rise & fall moulding with IP rated 40" TV Main Deck Saloon console units, Port & Stbd Dining console, forward dining console unit and TV rise and fall unit has recess to incorporate concealed low level LED rope lighting Satellite Television System. Seatel 100 TVHD 3 Axis Global including 3 x Technomate Euro free to air HD decoders.

Saloon, Master Stateroom and Crew Mess. Crew Mess decoder to be fed also to the Captains Cabin television with local control | Pre wire for possible future installation of satellite communications (Sea Tel V Sat) TV rise and fall - Aft face decorative panel | CCTV recording facility with NVR recorder, connected to the Tijssen IP cameras and Pepwave for monitoring .

2 x charging sockets in the garage Back lit signwriting on the stern | Exterior overhead lighting to be dimmable Fore Deck Spa Tub | Valve and 2nd filling point for the Fore Deck bath Removable pennant flag fitted to bell cradle structure | Teak topped lid for Fore Deck spa bath in three sections Additional AC sockets - 1 x Double Exterior Socket: Flybridge port side aft -, 1 x Double Exterior Socket:- Flybridge

located on the main table pedestal Flybridge starboard side cabinet with perspex storage for exterior glassware and bottles | Flybridge - 1 x Custom double fridge drawer unit in the starboard side bar

Fore Deck sail canopies fitted to wheelhouse deck seating area and main sunpad | Aft Cockpit - Additional slide in teak leaf for table with canvas bag for when not in use. Hair showers for all Guest En-suites and Day Head | Bidet Tecma toilets in Forward & Aft Guest En-suites | Bidet Tecma toilet in the Master En-suite Octo Marine Compact Water Softener | Water Maker - Idromar Water Maker 250 litres per hour Master en-suite outboard upstand recess in shower [stone, including stainless rail at the recess front] for

stowage of shower gels Guest cabin and Dining area electric blinds [except en-suites] upgraded to Sonnesse 30 premium quiet motors. Controls wired to Vimar and a Somfy Telis 6 RF remotes for each cabin.

Dedicated copex installed from Technical area to hardtop with pull wires for future fitment by Client of Flir camera Medium Tinted film to side windows and sliding doors.

Stern capstan winches - two Lewmar C6 400 Volt 3kW three phase vertical capstans fitted port and starboard. Capstans have dual rotation with separate controls with additional control Lewmar unit.

Folding stainless steel sink in the Laundry Room | Main Deck Aft Cockpit mooring bollards with stainless steel stopper eyes Additional sound insulation around underside of motors [cabin side] to reduce noise transfer to master stateroom and underside of the deck head in the en-suite and master cabin.

Miele H6980P 900mm Oven | Miele DGM6800 Steam Microwave combination oven | Custom Frigoboat MS 160

fridge drawer unit in Galley w/sea water cooling, taller lower drawer G63895. Under bed storage - lift up bed frame with gas support. No under bed drawers fitted to maximize storage in the Master, Port & Stbd double staterooms. All cabin doors with vertical grain to upper and lower panels and horizontal to middle panel with stainless trim detail.

Wooden flooring Cadorin Wenge WENSPOP10 in the Main Deck Saloon, Dining and Starboard Side Entrance Lobby Wooden flooring Cadorin Wenge WENSPOP10 in Master

Stateroom with Cormar Sensations Light Taupe inset carpet | Upgraded interior stone to Gold Calacatta.

Sprung mattress for Crew beds | Inboard berth moves outboard to create double berth - Forward Stbd & Port Twin Cabin Black out Blinds for the Port Aft Guest Stateroom, Starboard Aft Guest Stateroom, the Port Forward Guest Stateroom and the Starboard Forward Guest Stateroom.

Anchor windlass gypsys upgraded for 16mm chain. Two 165 metre lengths of 16mm high tensile galvanised chain.

2nd set stainless steel bathing ladder sockets on the Bathing Platform | Carbon fibre and polished stainless steel ensign staff suitable for 2.5 yard ensign Portable air compressor OP20P stored in the engine room with AC 220v power supply sockets in Garage, Engine Room and Fore Deck | Kahlenberg signal timer option on lower console. Two air conditioned chilled water pumps installed and valved to allow duty /standby operation | Two raw water pumps installed and valved to allow duty/standby operation. Tender diesel fuelling station with transfer pump from day tank and fuel hose reel | Black water IMO discharge installed at the stern.

COMMUNICATION & NAVIGATION EQUIPMENT

PLATINUM UPGRADE PACKAGE including:

Upgraded Anchor chain | Second pair of Mooring Bollards on Fore peak | Stainless steel Hydraulic Passerella upgrade | Side mount stairway | Teak Decking on Forepeak and Flybridge | Trailing Pumps | Auto Troll for Transmissions | Hydraulic Sleipner Stern thruster system | Fin stabilization system | Sewage Treatment plant | Air Conditioning for the Engine Room | Air Conditioning Marine Air chilled water system to Tropical specification and with quieter running WhisperCool DC fans | Diesel fuel long range overload tank of 5,050 litre capacity | Alfa Laval

Fuel cleaning centrifugal separator | Tijssen CCTV camera system with eight dedicated cameras | Tijssen SMS Paging facility | Tijssen Swipe card security alarm Integrated to MPA system | Tijssen MPA Generator Control and Monitoring System Upgrade | Vimar ByMe Interior Premium Lighting System Package | Superyacht Custom Commercial Galley Refrigeration | Miele Professional Appliances upgrade - Miele Washing machine, Miele Tumble dryer and Miele dishwasher | Flybridge hardtop, including retractable centre canopy and aft extending sun canopy | Underwater lights x 15. Built to RINA commercial rules 2013 and conformance to MCA LY3 but only issued with RINA pleasure certificates and MCA LY3 statement of compliance (private registration)

NAVIGATION EQUIPMENT UPGRADE FOR LY3:

Measuring Log and Echo Sounder. Furuno LS6100 with console and crew mess repeater RD33 | GPS. Furuno GP170 GPS Navigator with GPS antenna | AIS. Furuno FA 150 Class A AIS Transponder with GPS and VHF antenna | Bridge Navigational Watch Alarm. Furuno BR500 | Rudder Angle Indicator. Simrad RF45X | Satellite

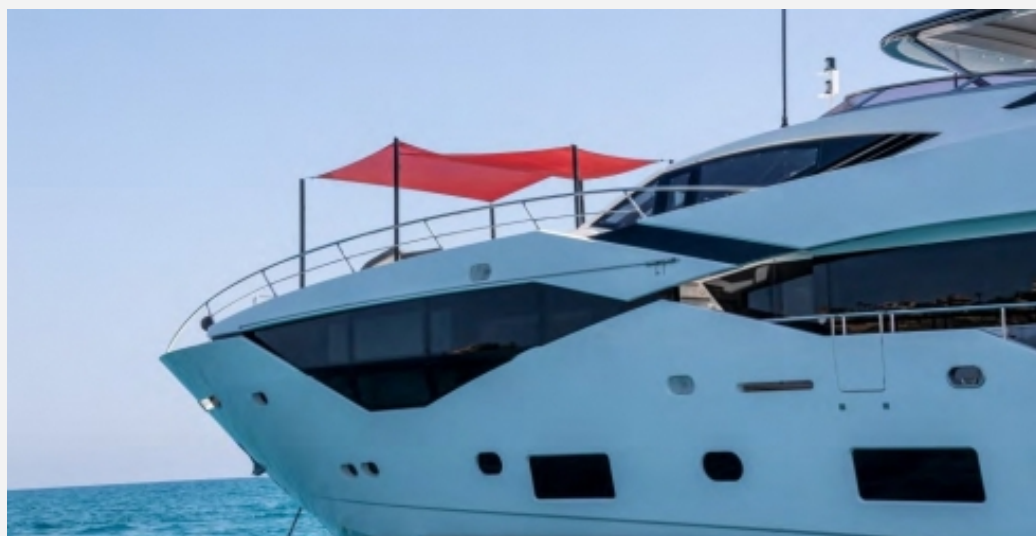
Gyro Compass. Hemisphere GNSS V103 | Autopilot. Simrad AP70 | Magnetic Compass. A magnetic compass with 6" card | Central Navigation Display. FT Nav-vision Navigation data display with trackball and wireless keyboard Electronic Chart System upgrades. Transas AIS, ARPA and Radar intergration.

COMMUNICATION EQUIPMENT UPGRADE:

MF Radio. Sailor 6310 MF/HF 150W Radio Telephone | VHF Radio. Sailor 6222 Class A VHF - DSC | VHF Radio. Simrad RS90 Class D VHF/DSc with Handsets in Wheelhouse, Fly console, Crew Mess and Emergency Steering Position | Inmarsat C with LRIT. Sailor 6110 | Navtex Receiver. Furuno NX700B | Handheld Portable VHF. 2x Icom IC GM1600E and BP234 | EPIRB. McMurdo E5 | SART. McMurdo S4 | Furuno ultra sonic wind sensor connected to the Central Navigation Display | Iridium 9555 Satellite Phone system with docking station and external passive antenna.







35.20 M / 115'48"





35.20 M / 115'48"



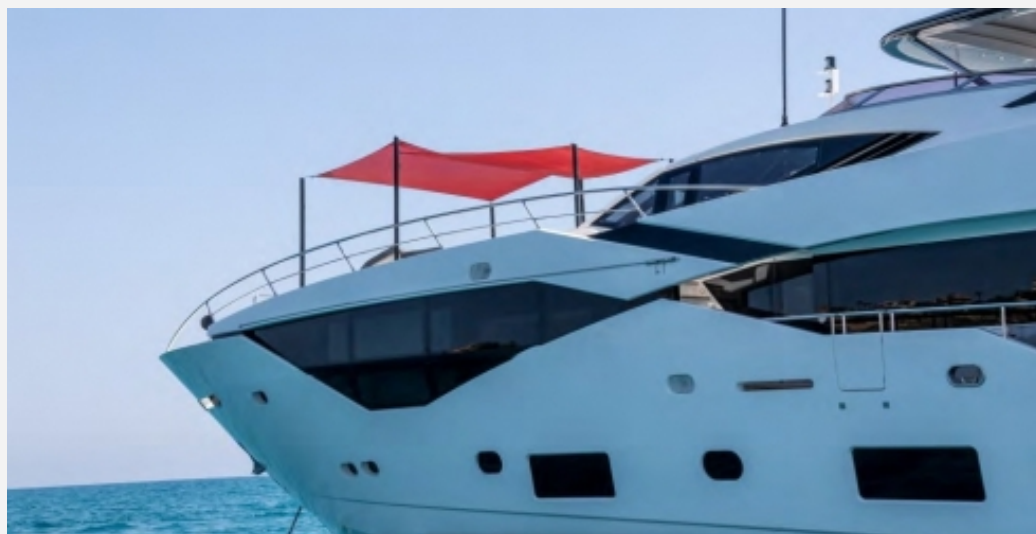














35.20 M / 115'48"

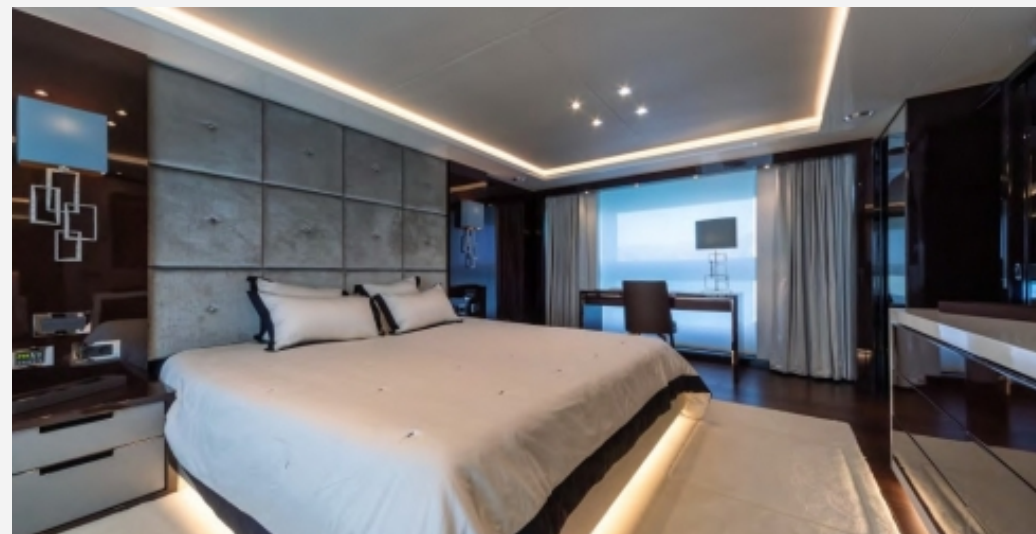
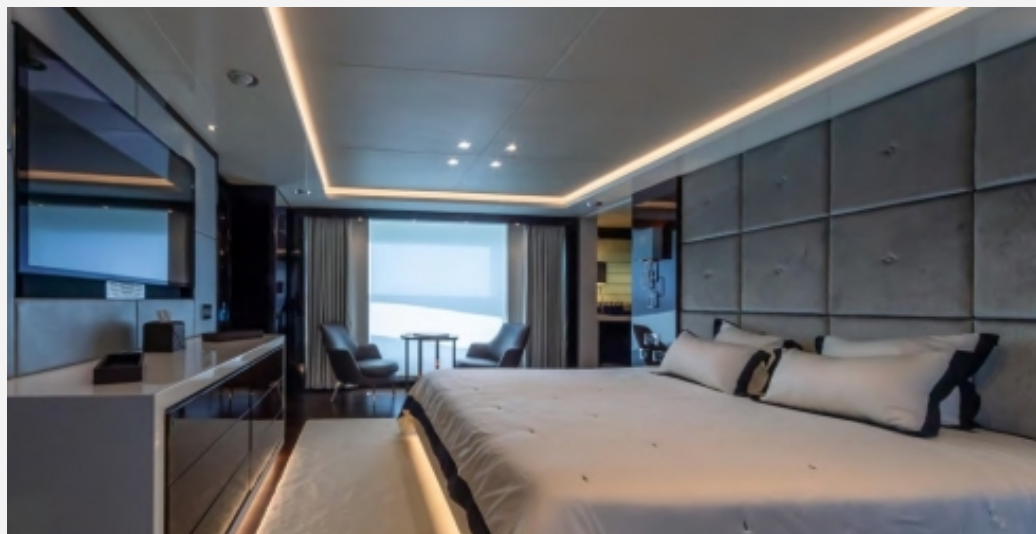




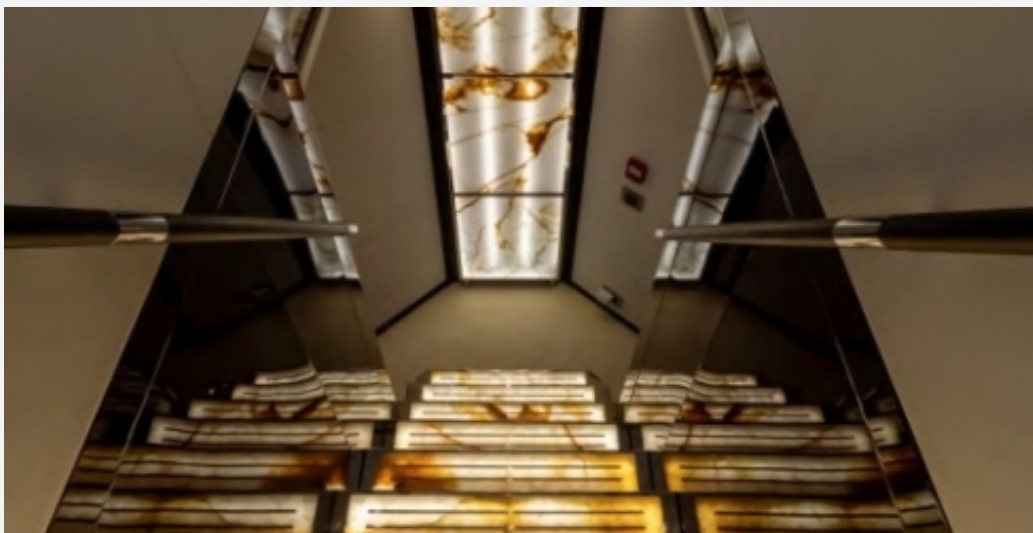














35.20 M / 115'48"

