



MAIN CHARACTERISTICS

Builder	Custom Line
Designer	Zuccon International
Built Year	2011
Hull Material	GRP
Length	32.62 M / 107'3"
Beam	7.00 M / 22'96"
Draft	2.37 M / 7'78"
Displacement	147.00 tons
Lying	Croatia
Registry	Malta
Tax Status	VAT PAID

5,500,000 EUR 6,425,309 USD*

* Approximate price conversion

 Address:

3 Rue de la Loge L-1945 Luxembourg

 Contact

Thomas Peltier • P: +352.27.40.99.90 • M: +352.621.326.323

 E-mail:

t.peltier@seastemia.com

DESCRIPTION

This Navetta Crescendo 33 meters Tri Decks remains in an immaculate condition with haul-out and full service every year, thanks to her owner and 5 crew. This fine yacht has never been chartered and is very well been taken care of. With her tri-deck configuration and luxury Fendi interior she will be your perfect cruising partner and treat you and your guests to an unrivalled experience on board.

SPECIFICATIONS

BOAT DETAILS

Built Year	2011	Lying	Croatia
Registry	Malta	Tax Status	VAT PAID

CERTIFICATION

Certification	RINA
----------------------	------

BUILDER / DESIGNER

Builder	Custom Line	Designer	Zuccon International
Model	Crescendo 33	Hull Type	Semi Displacement
Hull Material	GRP		

DIMENSIONS

Length	32.62 M / 107'3"	Beam	7.00 M / 22'96"
Draft	2.37 M / 7'78"	Displacement	147.00 tons

MACHINERY

Engine Maker	MAN	Drive	Shaft
Number of Engines	2	Propulsion Mode	Diesel
Engine(s) power	1,400.00 hp	Engine(s) model	MANV121200CR
Engine 1 hours	4,170.00 H.	Engine 2 hours	4,170.00 H.
Main Generator Maker	Fisher Panda Overhauled	Main Generator Power	53.00 KW
Main Generator Hours	650.00 H.	Auxiliary Generator Maker	Fisher Panda Overhauled
Auxiliary Generator Power	53.00 KW	Auxiliary Generator Hours	650.00 H.
Stabilizer Type	Hydraulic Thins	Stabilizer Maker	ABT + 3 Gyroscopes zero speed
Water Maker	2X Idromar MC5	Water Maker Flow	500.00 l/H / 132.00 gal/H
AC type	Reverse Cycle AIRCO in each cabin		

PERFORMANCES

Cruising Speed	12.00 knots	Max Speed	18.00 knots
Range	1,680.00 NM	Cruising Speed for Range	10.00 knots

TANKAGES

Fuel	16,300.00 liters / 4,303.20 US gals	Water	3,250.00 liters / 858.00 US gals
Grey Water	840.00 liters / 221.76 US gals	Black Water	840.00 liters / 221.76 US gals





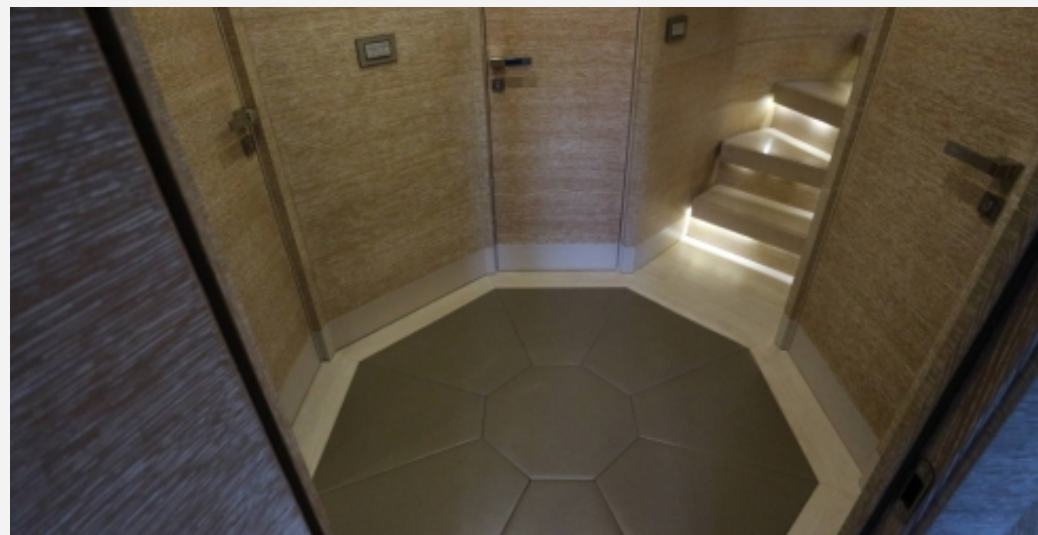
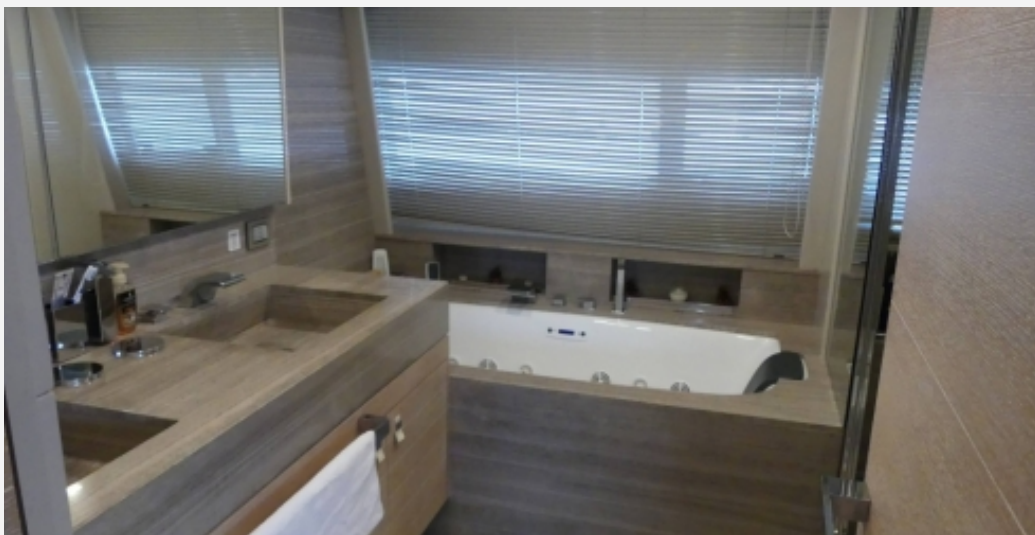
















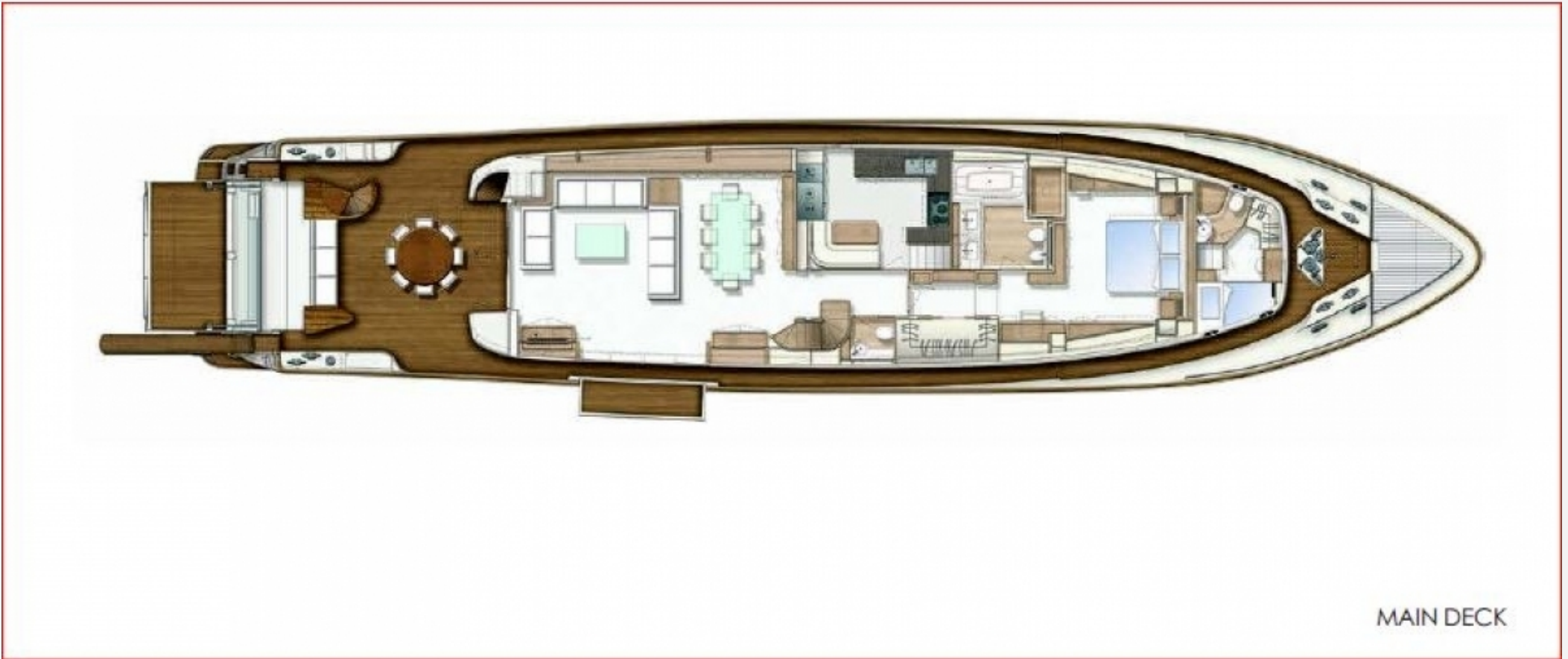


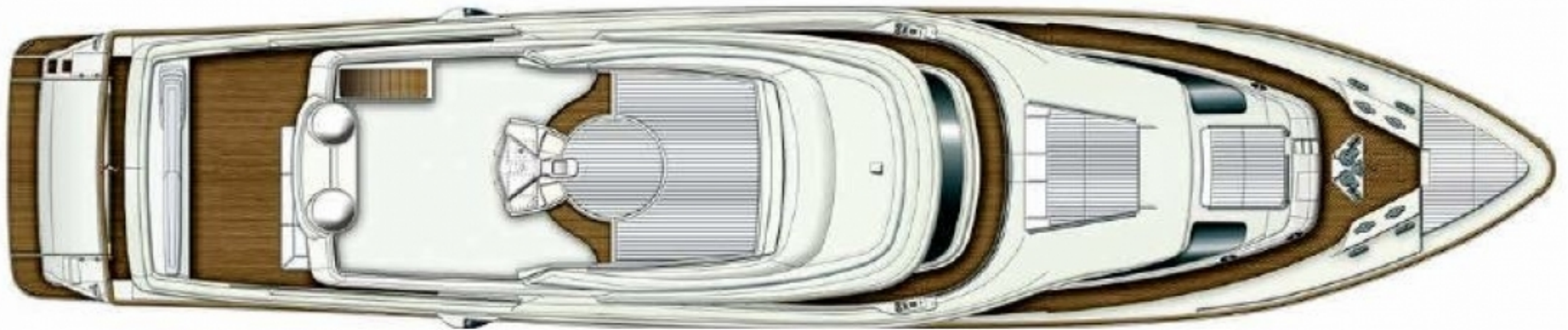
UPPER DECK



PROFILE







SUN DECK