

48.29 M / 158'43"



## CARACTÉRISTIQUES PRINCIPALES

**Builder****Designer**Enrico Gobbi, T4 - Team  
for Design**Built Year**

2018

**Refit Year**

2022

**Length**

48.29 M / 158'43"

**Beam**

8.90 M / 29'19"

**Draft**

2.85 M / 9'34"

**Displacement**


307.00 tonnes

**Registry**

Iles Marshall

# 44,300,000 EUR 51,975,817 USD\*


\* Conversion approximative

 Adresse:

3 Rue de la Loge L-1945 Luxembourg

 Contact

Thomas Peltier • P: +352.27.40.99.90 • M: +352.621.326.323

 E-mail:

t.peltier@seastemia.com

48.29 M / 158'43"

## SPÉCIFICATIONS

## DÉTAILS DU BATEAU

<b>Main Category</b>	Motor yacht	<b>Boat Status</b>	Brokerage
<b>Built Year</b>	2018	<b>Refit Year</b>	2022
<b>Registry</b>	Iles Marshall		

## CERTIFICATION

<b>Certification</b>	RINA
----------------------	------

## BUILDER / DESIGNER

<b>Builder</b>		<b>Designer</b>	Enrico Gobbi, T4 - Team for Design
<b>Naval Architect</b>	Arrabito	<b>Hull Type</b>	Semi Displacement
<b>Hull Configuration</b>	Mono Hull		

## DIMENSIONS

<b>Length</b>	48.29 M / 158'43"	<b>Beam</b>	8.90 M / 29'19"
---------------	-------------------	-------------	-----------------

48.29 M / 158'43"

## DIMENSIONS

<b>Draft</b>	2.85 M / 9'34"	<b>Displacement</b>	307.00 tonnes
--------------	----------------	---------------------	---------------

## MACHINERY

<b>Engine Maker</b>	MTU	<b>Drive</b>	Shaft
<b>Number of Engines</b>	4	<b>Propulsion Mode</b>	Diesel
<b>Engine(s) type</b>	Inboard	<b>Engine(s) power</b>	10,400.00 hp
<b>Engine(s) model</b>	16V 2000 M96L		

## PERFORMANCES

<b>Cruising Speed</b>	26.00 noeuds	<b>Max Speed</b>	33.00 noeuds
<b>Range</b>	3,300.00 NM	<b>Cruising Speed for Range</b>	12.00 noeuds

## TANKAGES

<b>Fuel</b>	45,000.00 litres / 11,880.00 US gals	<b>Grey Water</b>	4,000.00 litres / 1,056.00 US gals
-------------	--------------------------------------	-------------------	------------------------------------

## ACCOMODATIONS

<b>Sleeps</b>	12 guests	<b>Courette</b>	3 simple, 4 double
---------------	-----------	-----------------	--------------------

48.29 M / 158'43"

## ACCOMODATIONS

<b>Bathroom</b>	6	<b>Crew</b>	9
<b>Crew Berths</b>	9		



48.29 M / 158'43"



48.29 M / 158'43"

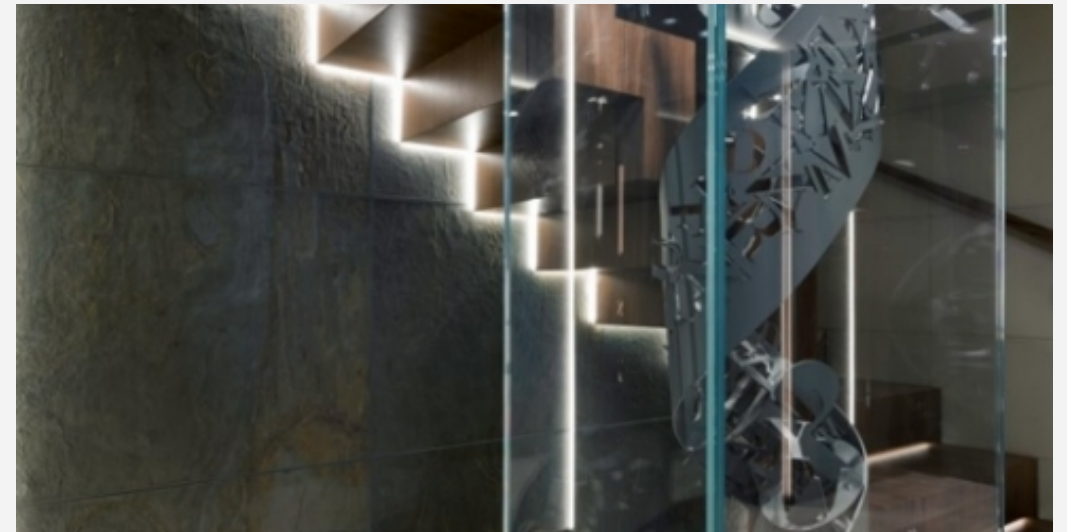




48.29 M / 158'43"



48.29 M / 158'43"





48.29 M / 158'43"



48.29 M / 158'43"





48.29 M / 158'43"





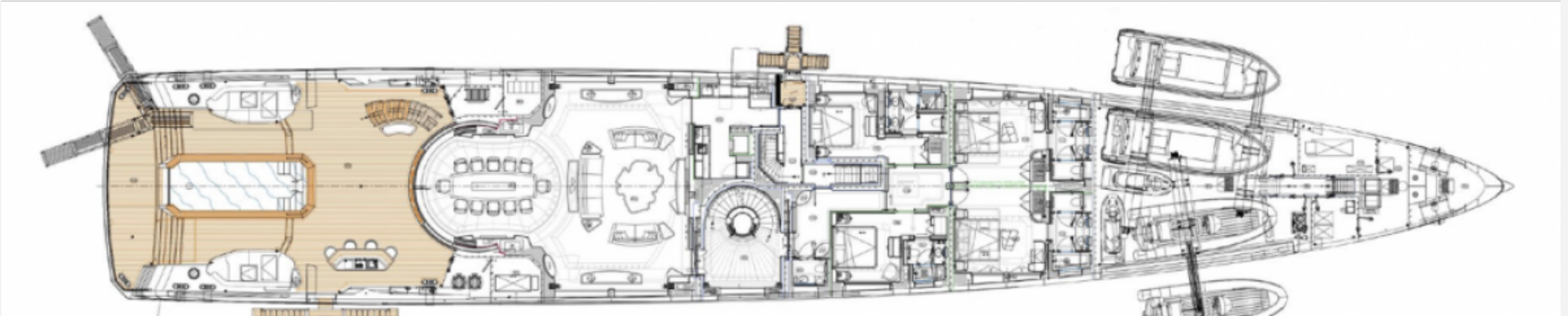
48.29 M / 158'43"



48.29 M / 158'43"



48.29 M / 158'43"





48.29 M / 158'43"

