

11.71 M / 38'42"



CARACTÉRISTIQUES PRINCIPALES

Builder**Designer**Jeanneau, Michael
Peters, Garroni**Built Year**

2019

Length

11.71 M / 38'42"

Beam

3.59 M / 11'77"

Draft

1.07 M / 3'50"

Displacement

6.83 tonnes

349,000 EUR 399,149 USD*


* Conversion approximative

 Adresse:

3 Rue de la Loge L-1945 Luxembourg

 Contact

Thomas Peltier • P: +352.27.40.99.90 • M: +352.621.326.323

 E-mail:

t.peltier@seastemia.com

11.71 M / 38'42"

SPÉCIFICATIONS

DÉTAILS DU BATEAU

Main Category	Motor yacht	Built Year	2019
----------------------	-------------	-------------------	------

CERTIFICATION

Category	B
-----------------	---

BUILDER / DESIGNER

Builder		Designer	Jeanneau, Michael Peters, Garroni
Model	NC37	Hull Type	Planning Hull

DIMENSIONS

Length	11.71 M / 38'42"	Beam	3.59 M / 11'77"
Draft	1.07 M / 3'50"	Displacement	6.83 tonnes

MACHINERY

Engine Maker	Volvo	Drive	
---------------------	-------	--------------	--

11.71 M / 38'42"

MACHINERY

Number of Engines	2	Propulsion Mode	Diesel
Engine(s) type	Inboard	Engine(s) power	440.00 hp
Engine(s) model	VOLVO PENTA D3-220ZD	Heures moteur 1	120.00 H.
Heures moteur 2	120.00 H.	Gearboxes/Transmission	DPI (Duoprop IPS) Aquamatic Sterndrive
Stabilizer Type		Stabilizer Maker	Humphree

PERFORMANCES

Cruising Speed	21.00 noeuds	Max Speed	27.70 noeuds
Range	170.00 NM	Cruising Speed for Range	21.00 noeuds

TANKAGES

Fuel	650.00 litres / 171.60 US gals	Water	200.00 litres / 52.80 US gals
-------------	--------------------------------	--------------	-------------------------------

ACCOMODATIONS

Sleeps	8 guests	Couquette	4 simple
---------------	----------	------------------	----------

11.71 M / 38'42"

ACCOMODATIONS

Bathroom

1

11.71 M / 38'42"



11.71 M / 38'42"



11.71 M / 38'42"



11.71 M / 38'42"



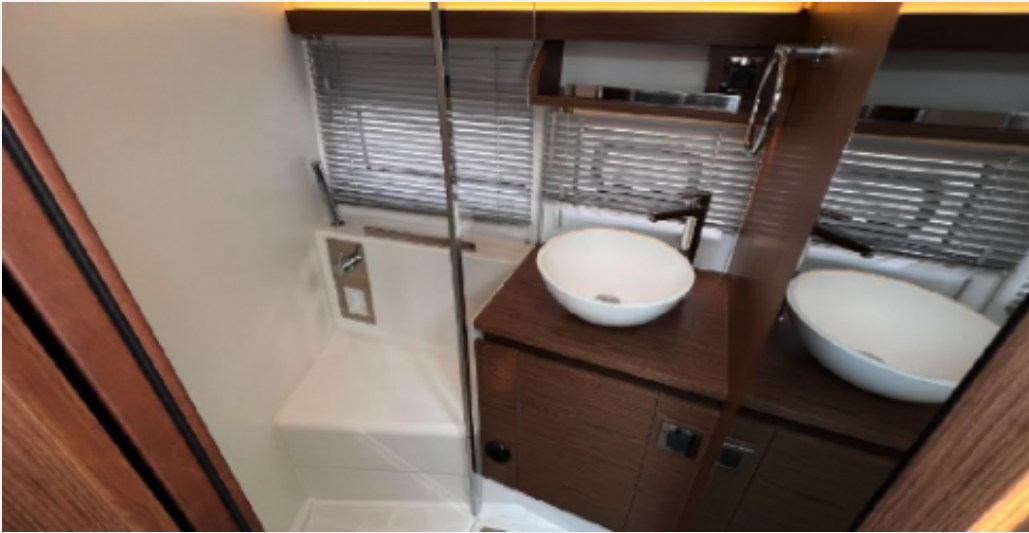
11.71 M / 38'42"



11.71 M / 38'42"



11.71 M / 38'42"



11.71 M / 38'42"



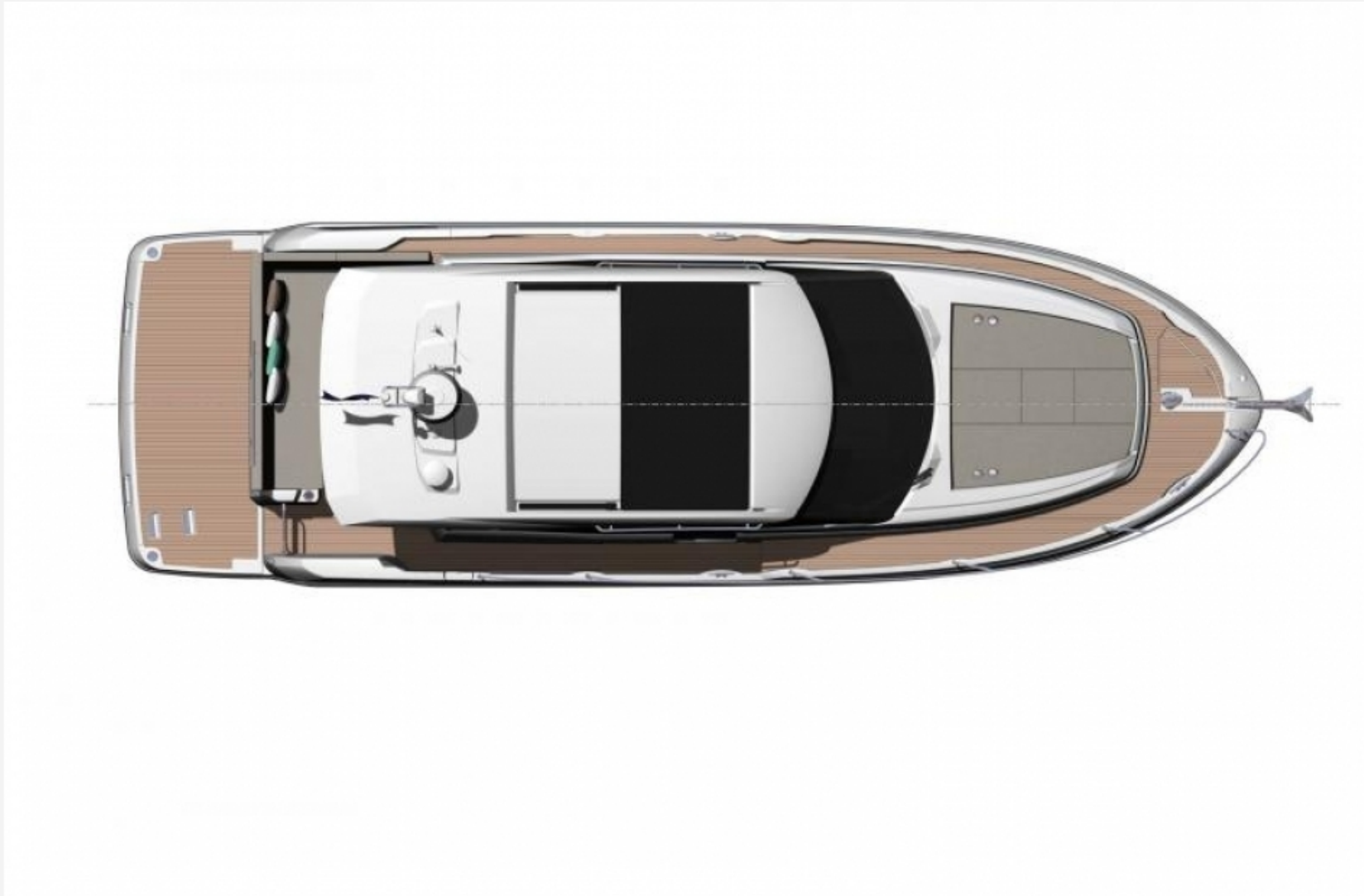
11.71 M / 38'42"



11.71 M / 38'42"



11.71 M / 38'42"



11.71 M / 38'42"



11.71 M / 38'42"

