



CARACTÉRISTIQUES PRINCIPALES

Builder

Designer

Guidot de Groot

Built Year

2018

Length

27.15 M / 89'7"

Beam

6.64 M / 21'78"

Draft

1.72 M / 5'63"

Registry

Malte

5,950,000 EUR 6,907,325 USD*

* Conversion approximative

🏠 Adresse:

3 Rue de la Loge L-1945 Luxembourg

📞 Contact

Thomas Peltier • P: +352.27.40.99.90 • M: +352.621.326.323

✉ E-mail:

t.peltier@seastemia.com

SPÉCIFICATIONS

DÉTAILS DU BATEAU

Boat Status	Brokerage	Built Year	2018
Registry	Malte		

BUILDER / DESIGNER

Builder		Designer	Guidot de Groot
Hull Type	Semi Displacement	Hull Configuration	Mono Hull

DIMENSIONS

Length	27.15 M / 89'7"	Beam	6.64 M / 21'78"
Draft	1.72 M / 5'63"		

MACHINERY

Engine Maker	Caterpillar	Drive	Shaft
Number of Engines	2	Propulsion Mode	Diesel

MACHINERY

Engine(s) power	390.00 hp	Engine(s) model	C12 ACERT
Heures moteur 1	1,300.00 H.	Heures moteur 2	1,300.00 H.
Gearboxes/Transmission	ZF360	Main Generator Maker	Caterpilalr
Main Generator Power	28.00 KW	Auxiliary Generator Maker	Caterpillar
Stabilizer Type	Gyroscopic	Stabilizer Maker	SEAKEEPER 35
Water Maker	Aquamatic Searecovery	Water Maker Flow	285.00 l/H / 75.24 gal/H
AC type	Clion Marine Tropical autoreverse cooling and heating	AC capacity	178,000.00 BTU

PERFORMANCES

Cruising Speed	11.00 noeuds	Max Speed	14.00 noeuds
Range	3,000.00 NM		

TANKAGES

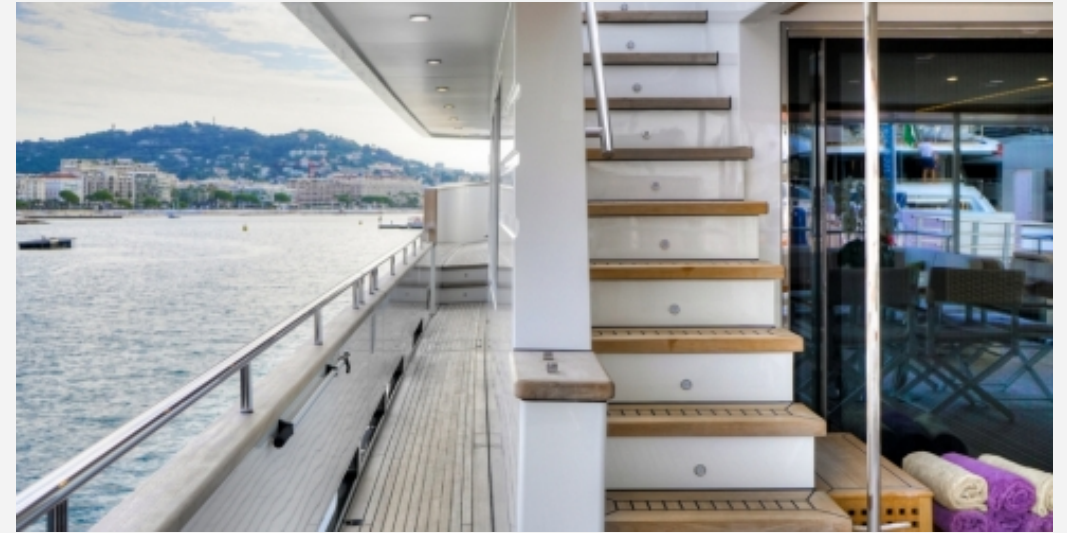
Fuel	12,760.00 litres / 3,368.64 US gals	Water	2,500.00 litres / 660.00 US gals
Holding	2,000.00 litres / 528.00 US gals		

ACCOMODATIONS

Sleeps	8 guests	Courette	2 simple, 3 double
Bathroom	3	Crew	3
	3		

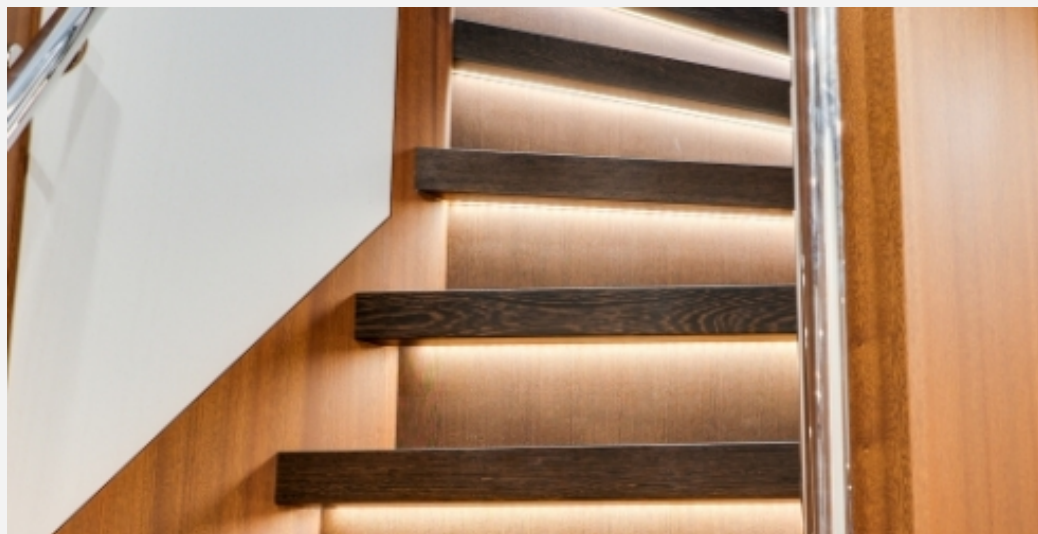
27.15 M / 89'7"



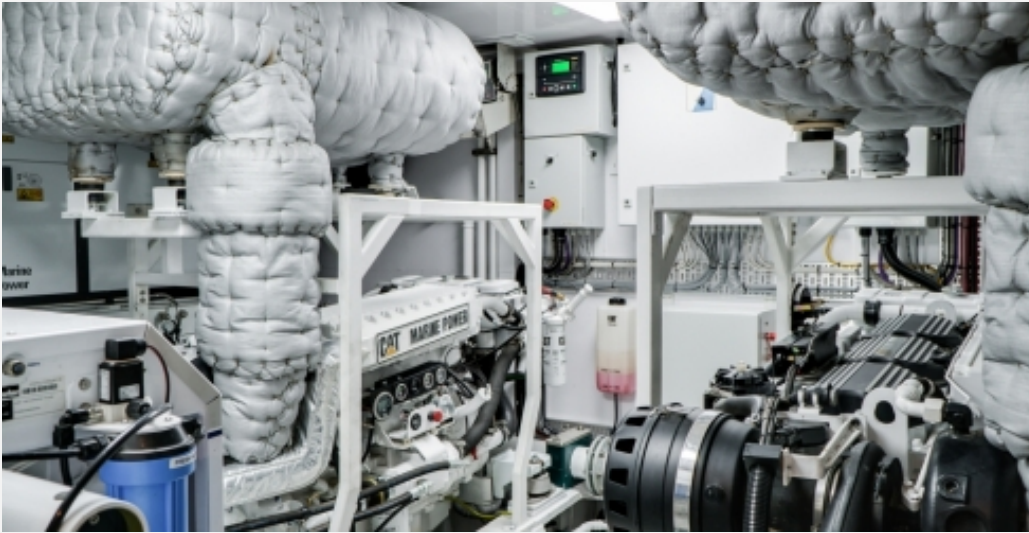












27.15 M / 89'7"

