

62.70 M / 205'71"



## CARACTÉRISTIQUES PRINCIPALES

**Builder****Designer**Enrico Gobbi, T4 - Team  
for Design**Built Year**

2018

**Refit Year**

2022

**Length**

62.70 M / 205'71"

**Beam**

11.00 M / 36'9"

**Draft**

2.06 M / 6'75"

**Displacement**


443.29 tonnes

**Registry**

Iles Marshall

# 44,300,000 EUR 51,427,649 USD\*


\* Conversion approximative

 Adresse:

3 Rue de la Loge L-1945 Luxembourg

 Contact

Thomas Peltier • P: +352.27.40.99.90 • M: +352.621.326.323

 E-mail:

t.peltier@seastemia.com

## SPÉCIFICATIONS

## DÉTAILS DU BATEAU

<b>Main Category</b>	Motor yacht	<b>Boat Status</b>	Brokerage
<b>Built Year</b>	2018	<b>Refit Year</b>	2022
<b>Registry</b>	Iles Marshall		

## CERTIFICATION

<b>Certification</b>	RINA
----------------------	------

## BUILDER / DESIGNER

<b>Builder</b>		<b>Designer</b>	Enrico Gobbi, T4 - Team for Design
<b>Naval Architect</b>	Arrabito	<b>Hull Type</b>	Semi Displacement
<b>Hull Configuration</b>	Mono Hull		

## DIMENSIONS

<b>Length</b>	62.70 M / 205'71"	<b>Beam</b>	11.00 M / 36'9"
---------------	-------------------	-------------	-----------------

62.70 M / 205'71"

## DIMENSIONS

<b>Draft</b>	2.06 M / 6'75"	<b>Displacement</b>	443.29 tonnes
--------------	----------------	---------------------	---------------

## MACHINERY

<b>Engine Maker</b>	MTU	<b>Drive</b>	Shaft
<b>Number of Engines</b>	4	<b>Propulsion Mode</b>	Diesel
<b>Engine(s) type</b>	Inboard	<b>Engine(s) power</b>	10,400.00 hp
<b>Engine(s) model</b>	16V 2000 M96L	<b>Heures moteur 1</b>	3,119.00 H.
<b>Heures moteur 2</b>	3,203.00 H.	<b>Heures moteur 3</b>	2,931.00 H.
<b>Main Generator Maker</b>	Caterpillar	<b>Main Generator Power</b>	167.00 KW
<b>Main Generator Hours</b>	16,754.00 H.	<b>Auxiliary Generator Maker</b>	Caterpilla
<b>Auxiliary Generator Power</b>	167.00 KW	<b>Auxiliary Generator Hours</b>	15,140.00 H.
<b>Stabilizer Type</b>	Hydraulic Thins		

## PERFORMANCES

<b>Cruising Speed</b>	26.00 noeuds	<b>Max Speed</b>	33.00 noeuds
-----------------------	--------------	------------------	--------------

62.70 M / 205'71"

## PERFORMANCES

<b>Range</b>	3,300.00 NM	<b>Cruising Speed for Range</b>	12.00 noeuds
--------------	-------------	---------------------------------	--------------

## TANKAGES

<b>Fuel</b>	45,000.00 litres / 11,880.00 US gals	<b>Grey Water</b>	4,000.00 litres / 1,056.00 US gals
-------------	--------------------------------------	-------------------	------------------------------------

## ACCOMODATIONS

<b>Sleeps</b>	12 guests	<b>Courette</b>	3 simple, 4 double
---------------	-----------	-----------------	--------------------

<b>Bathroom</b>	6	<b>Crew</b>	9
-----------------	---	-------------	---

	9		
--	---	--	--

62.70 M / 205'71"



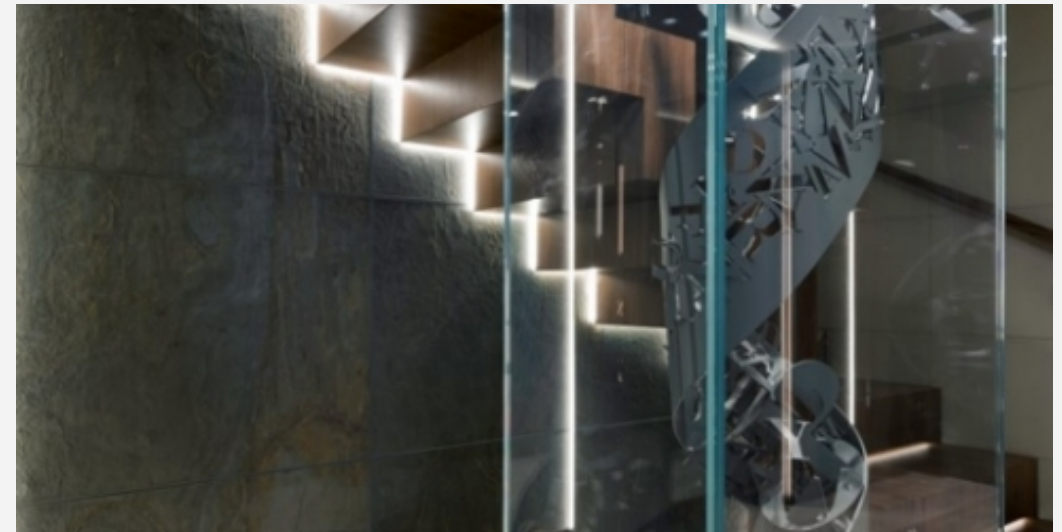
62.70 M / 205'71"



62.70 M / 205'71"



62.70 M / 205'71"



62.70 M / 205'71"



62.70 M / 205'71"



62.70 M / 205'71"



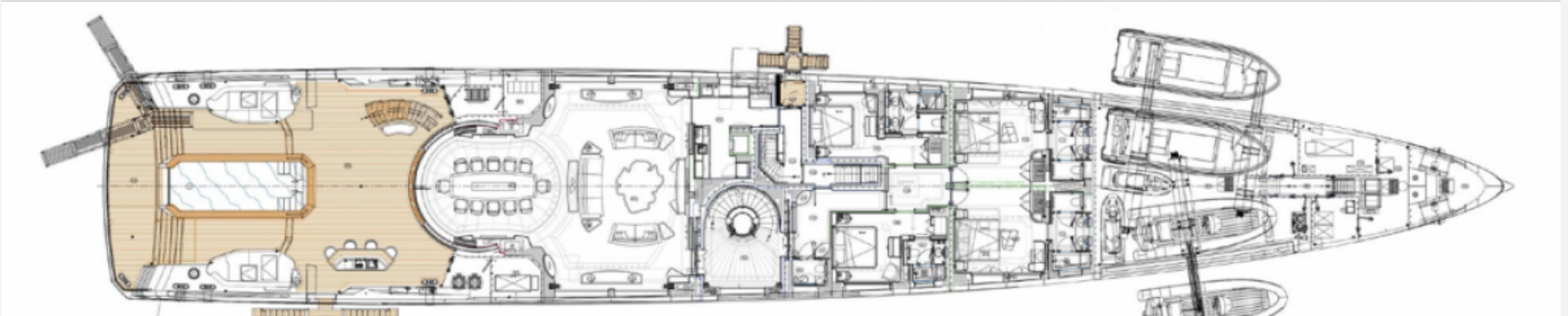
62.70 M / 205'71"



62.70 M / 205'71"



62.70 M / 205'71"



62.70 M / 205'71"

