

41.84 M / 137'28"



## CARACTÉRISTIQUES PRINCIPALES

**Builder****Built Year**

2023

**Length**

41.84 M / 137'28"

**Beam**

8.14 M / 26'71"

**Draft**

2.29 M / 7'50"

**Displacement**

220.00 tonnes

**20,500,000 EUR 23,798,348 USD\***

\* Conversion approximative

🏠 Adresse:

3 Rue de la Loge L-1945 Luxembourg

📞 Contact

Thomas Peltier • P: +352.27.40.99.90 • M: +352.621.326.323

✉ E-mail:

t.peltier@seastemia.com

## SPÉCIFICATIONS

## DÉTAILS DU BATEAU

<b>Main Category</b>	Motor yacht	<b>Boat Status</b>	Brokerage
<b>Built Year</b>	2023		

## CERTIFICATION

<b>Certification</b>	RINA	<b>Compliance</b>	□HULL, • MACH, Y Ch, Unrestricted Navigation, + MCA Compliance
----------------------	------	-------------------	---

## BUILDER / DESIGNER

<b>Builder</b>		<b>Naval Architect</b>	Studio Zuccon
<b>Hull Type</b>	Semi Displacement	<b>Hull Configuration</b>	Mono Hull

## DIMENSIONS

<b>Length</b>	41.84 M / 137'28"	<b>Beam</b>	8.14 M / 26'71"
<b>Draft</b>	2.29 M / 7'50"	<b>Displacement</b>	220.00 tonnes

## MACHINERY

<b>Engine Maker</b>	Caterpillar	<b>Drive</b>	Shaft
<b>Number of Engines</b>	2	<b>Propulsion Mode</b>	Diesel
<b>Engine(s) power</b>	1,622.00 hp	<b>Engine(s) model</b>	CAT C32ACERT V12 Tier3
<b>Heures moteur 1</b>	2,275.00 H.	<b>Heures moteur 2</b>	2,275.00 H.
<b>Gearboxes/Transmission</b>	2xZF	<b>Main Generator Maker</b>	Zenoro
<b>Main Generator Power</b>	80.00 KW	<b>Main Generator Hours</b>	6,994.00 H.
<b>Auxiliary Generator Maker</b>	Zenoro	<b>Auxiliary Generator Power</b>	80.00 KW
<b>Auxiliary Generator Hours</b>	6,994.00 H.	<b>Stabilizer Type</b>	Hydraulic Thins
<b>Stabilizer Maker</b>	NAIAD DYNAMICS Zero speed and Underway	<b>Water Maker</b>	IDROMAR
<b>Water Maker Flow</b>	500.00 l/H / 132.00 gal/H	<b>AC type</b>	Tropical

## PERFORMANCES

<b>Cruising Speed</b>	13.00 noeuds	<b>Max Speed</b>	16.00 noeuds
<b>Range</b>	3,000.00 NM	<b>Cruising Speed for Range</b>	10.00 noeuds

## TANKAGES

<b>Fuel</b>	37,000.00 litres / 9,768.00 US gals	<b>Water</b>	4,000.00 litres / 1,056.00 US gals
<b>Water Maker</b>	4,000.00 litres / 1,056.00 US gals	<b>Grey Water</b>	1,900.00 litres / 501.60 US gals
<b>Black Water</b>	1,900.00 litres / 501.60 US gals		

## ACCOMODATIONS

<b>Sleeps</b>	10 guests	<b>Courette</b>	5 double
<b>Bathroom</b>	5	<b>Crew</b>	9
	9		



41.84 M / 137'28"

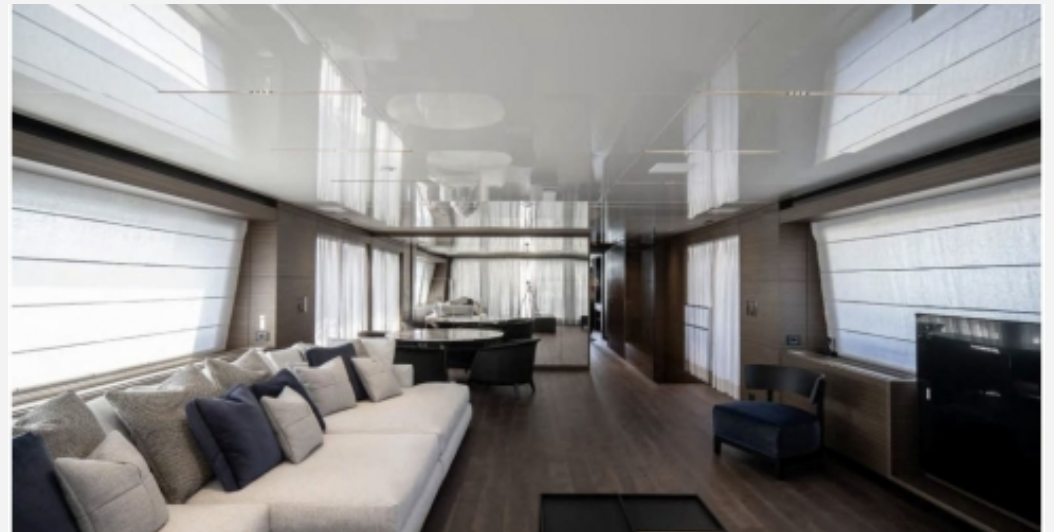


41.84 M / 137'28"









41.84 M / 137'28"



41.84 M / 137'28"











