

77.80 M / 255'25"



CARACTÉRISTIQUES PRINCIPALES

Builder**Designer**ESPEN OEINO /
FRANCOIS ZURETTI**Built Year**

2022

Length

77.80 M / 255'25"

Beam

14.00 M / 45'92"

Draft

3.85 M / 12'63"

Registry

Iles Cayman

185,000,000 EUR 214,765,575 USD*


* Conversion approximative

 Adresse:

3 Rue de la Loge L-1945 Luxembourg

 Contact

Thomas Peltier • P: +352.27.40.99.90 • M: +352.621.326.323

 E-mail:

t.peltier@seastemia.com

77.80 M / 255'25"

SPÉCIFICATIONS

DÉTAILS DU BATEAU

Main Category	Commercial vessel	Built Year	2022
Registry	Iles Cayman		

CERTIFICATION

Certification	Loyd
----------------------	------

BUILDER / DESIGNER

Builder		Designer	ESPEN OEINO / FRANCOIS ZURETTI
Hull Type	Displacement		

DIMENSIONS

Length	77.80 M / 255'25"	Beam	14.00 M / 45'92"
Draft	3.85 M / 12'63"		

77.80 M / 255'25"

MACHINERY

Engine Maker	MTU	Drive	Shaft
Number of Engines	2	Propulsion Mode	Diesel
Engine(s) power	3,050.00 hp	Engine(s) model	2 x MTU 16V4000M63L
Heures moteur 1	1,640.00 H.	Heures moteur 2	1,640.00 H.
Gearboxes/Transmission	Reintjes WAF 863 Ratio 5.842:1	Main Generator Maker	SCANIA DIESEL DI16-047M
Main Generator Power	400.00 KW	Main Generator Hours	7,500.00 H.
Auxiliary Generator Maker	SCANIA DIESEL DI16-047M	Auxiliary Generator Power	400.00 KW
Auxiliary Generator Hours	7,500.00 H.	Stabilizer Type	Hydraulic Thins
Stabilizer Maker	Naiad Hydraulic power unit 2x18,5 kW - 4FINS	Water Maker	IDROMAR
Water Maker Flow	3,000.00 l/H / 792.00 gal/H	AC type	Heinen & Hopman Engineering

77.80 M / 255'25"



77.80 M / 255'25"



77.80 M / 255'25"



77.80 M / 255'25"



77.80 M / 255'25"



77.80 M / 255'25"



77.80 M / 255'25"



77.80 M / 255'25"



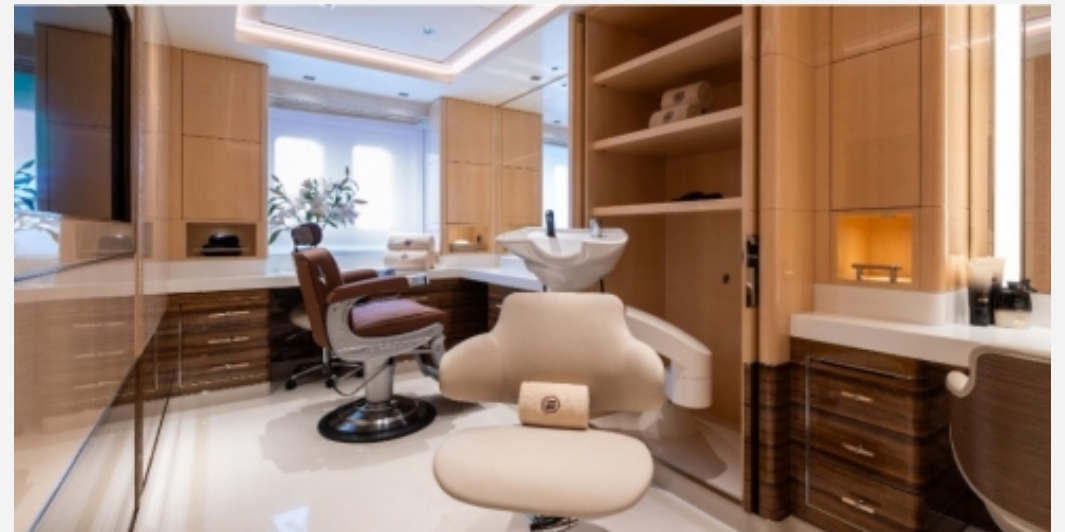
77.80 M / 255'25"



77.80 M / 255'25"



77.80 M / 255'25"



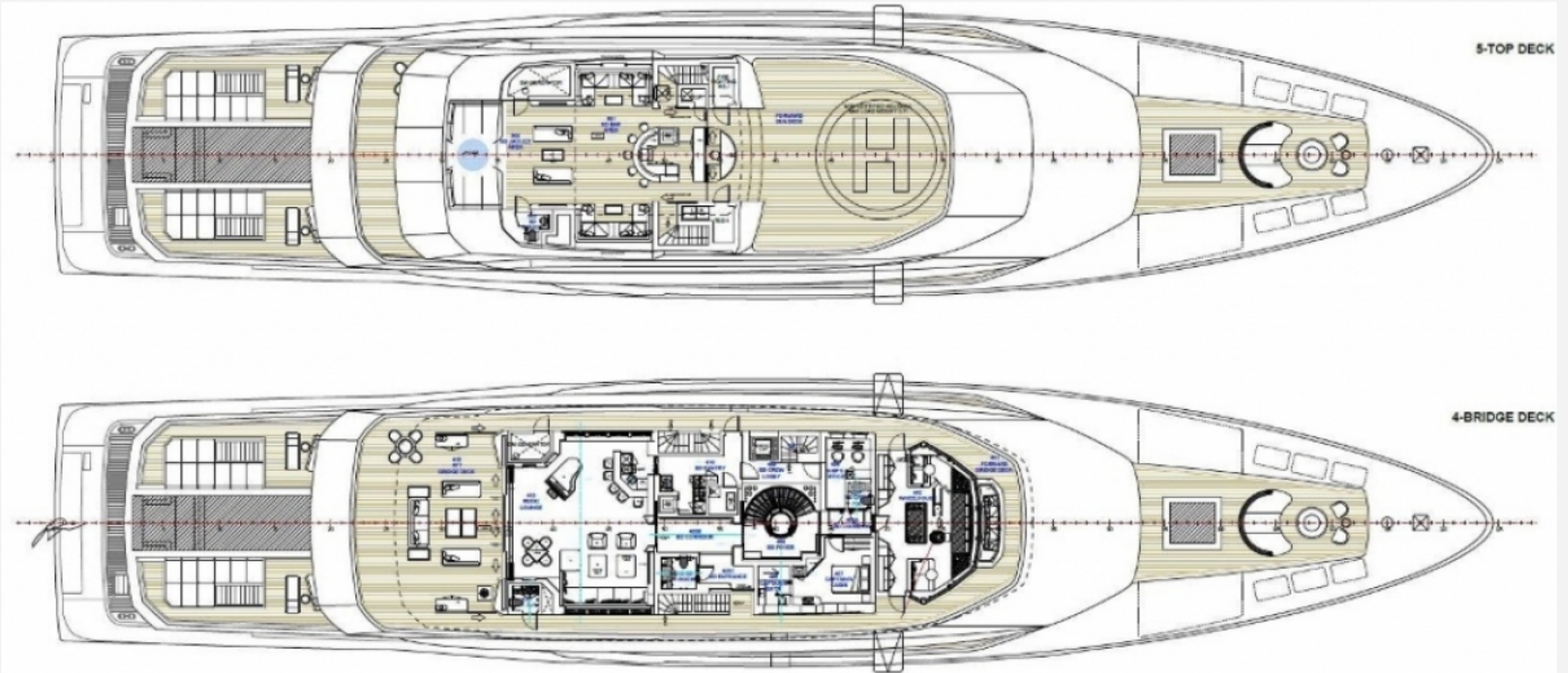
77.80 M / 255'25"



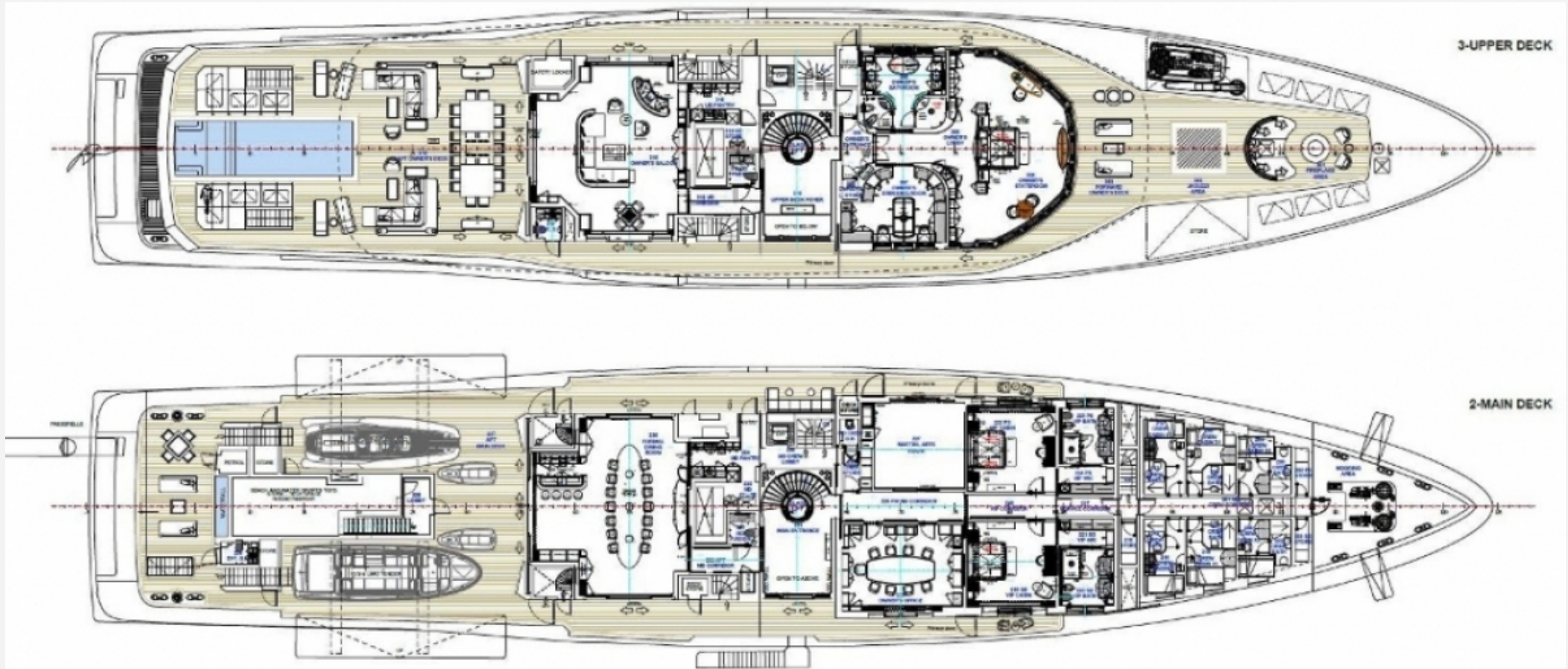
77.80 M / 255'25"



77.80 M / 255'25"



77.80 M / 255'25"



77.80 M / 255'25"

