

13.82 M / 45'34"



## CARACTÉRISTIQUES PRINCIPALES

<b>Builder</b>	
<b>Designer</b>	Too Design - Marco Casali
<b>Built Year</b>	2021
<b>Length</b>	13.82 M / 45'34"
<b>Beam</b>	3.95 M / 12'96"
<b>Draft</b>	1.33 M / 4'36"

**650,000 EUR** 757,434 USD\*

\* Conversion approximative

🏠 Adresse:

3 Rue de la Loge L-1945 Luxembourg

📞 Contact

Thomas Peltier • P: +352.27.40.99.90 • M: +352.621.326.323

✉ E-mail:

t.peltier@seastemia.com

13.82 M / 45'34"

## SPÉCIFICATIONS

## DÉTAILS DU BATEAU

<b>Main Category</b>	Motor yacht	<b>Boat Status</b>	Brokerage
<b>Built Year</b>	2021		

## CERTIFICATION

<b>Category</b>	A	<b>Compliance</b>	Rina
-----------------	---	-------------------	------

## BUILDER / DESIGNER

<b>Builder</b>		<b>Designer</b>	Too Design - Marco Casali
<b>Naval Architect</b>	Ferretti Group	<b>Model</b>	Itama 45S
<b>Hull Type</b>	Planning Hull		

## DIMENSIONS

<b>Length</b>	13.82 M / 45'34"	<b>Beam</b>	3.95 M / 12'96"
<b>Draft</b>	1.33 M / 4'36"		

13.82 M / 45'34"

## MACHINERY

<b>Engine Maker</b>	Cummins	<b>Drive</b>	Shaft
<b>Number of Engines</b>	2	<b>Propulsion Mode</b>	Diesel
<b>Engine(s) type</b>	Inboard	<b>Engine(s) power</b>	550.00 hp
<b>Engine(s) model</b>	QSB 6.7	<b>Heures moteur 1</b>	255.00 H.
<b>Heures moteur 2</b>	255.00 H.	<b>Main Generator Maker</b>	onan
<b>Main Generator Power</b>	9.00 KW	<b>Main Generator Hours</b>	480.00 H.

## PERFORMANCES

<b>Cruising Speed</b>	30.00 noeuds	<b>Max Speed</b>	34.00 noeuds
<b>Range</b>	280.00 NM	<b>Cruising Speed for Range</b>	26.00 noeuds

## TANKAGES

<b>Fuel</b>	1,130.00 litres / 298.32 US gals	<b>Water</b>	330.00 litres / 87.12 US gals
<b>Holding</b>	42.00 litres / 11.09 US gals		

## ACCOMODATIONS

<b>Sleeps</b>	4 guests	<b>Courette</b>	2 simple, 1 double
---------------	----------	-----------------	--------------------

13.82 M / 45'34"

## ACCOMODATIONS

**Bathroom**

1

13.82 M / 45'34"



13.82 M / 45'34"



13.82 M / 45'34"



13.82 M / 45'34"



13.82 M / 45'34"



13.82 M / 45'34"



13.82 M / 45'34"



13.82 M / 45'34"



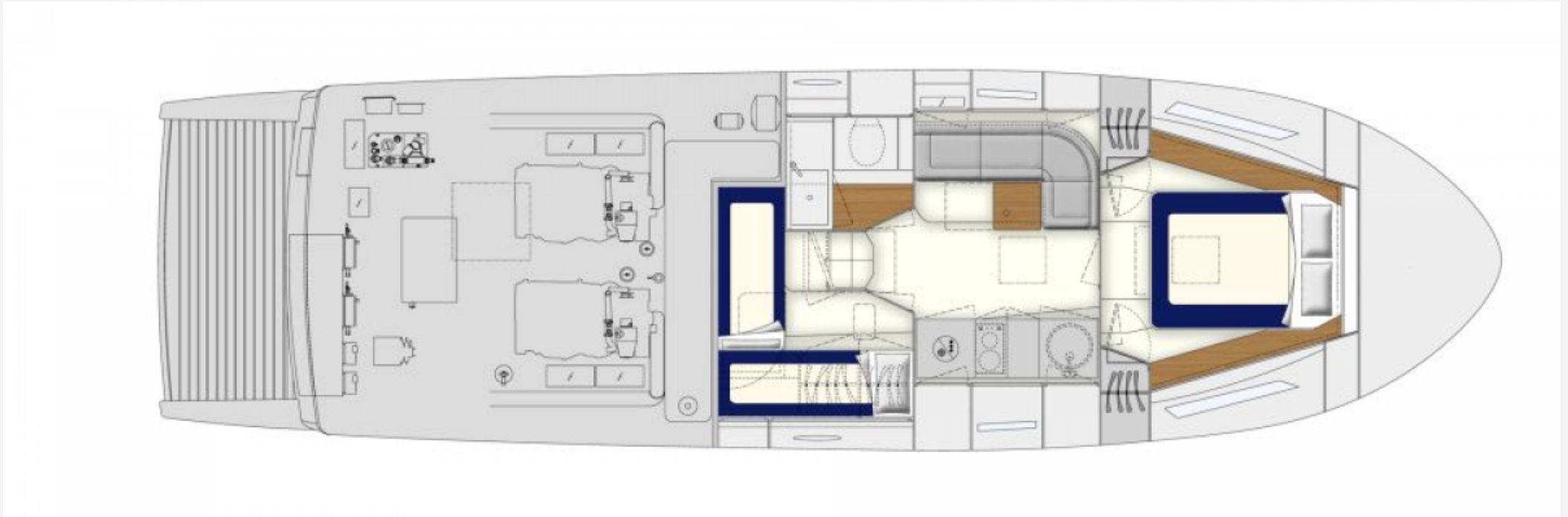
13.82 M / 45'34"



13.82 M / 45'34"



13.82 M / 45'34"



13.82 M / 45'34"

